

PGM100

• 40 W

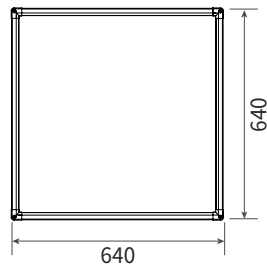
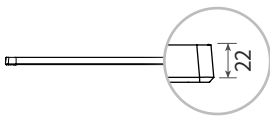


M Bar Type



DIMENSION

- Size : 640 x 640 x 22 mm
- Weight : 3.3 kg



FEATURES

- Narrow bezel maximizes light-emitting area
- Slim thickness and ultralight weight enables easy installation and maintenance
- LED replacement for 36W x 3 with up to 60% energy saving
- Comfortable light without glare and flicker
- Suitable size for both new construction and replacement
- Airtight structure to prevent the inflow of foreign substances

APPLICATION



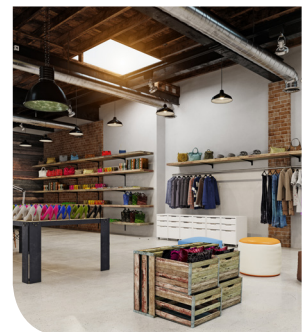
Living room



Hallway



Office



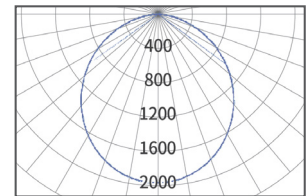
Store

SPECIFICATION

Model No.	PGM100-40
Wattage	40 W
Luminous Efficacy	120 lm/W
Total Lumen	4,800 lm
Replacement	CFL 80 W
Size	640 x 640 x 22 mm
Weight	3.3 kg
CCT	5,700 K
CRI	80 Ra
Beam Angle	110°
Voltage	AC 220 V
Frequency	60 Hz
Installation Angle	0°
LED Package	LG 5630 G5
PF	> 0.9
THD	< 20%
Operating Temperature	-20°C ~ 40°C (-4°F ~ 104°F)
LED Package Life time	50,000 hours (25°C) *LED package life time according to industry standard (LM80), high operating temperature may shorten life span of LED package and LED lamp.

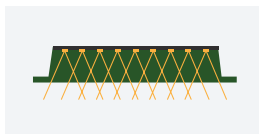
Edge type LED panel light with maximized light emitting area by narrow bezel

LIGHT DISTRIBUTION CURVE

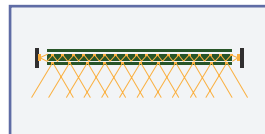


LED EDGE TYPE

- Laser embossing pattern type of LGP (Light Guide Panel)
- Narrow bezel maximizes light emitting area
- Slim & simple design
- Airtight structure to prevent the inflow of foreign substances
- Reduced eye fatigue improves work & learning efficiency



Direct Type



Edge Type

ECONOMIC ANALYSIS

- e.g.) \$0.1/kWh, 12h/d, 365d/y.
- FPL 36W (3 pcs) → ICEPIPE LED Panel Light 40W (1 pc)



Energy
108 W → 40 W

63 % Down



Efficiency
80 lm/W → 125 lm/W

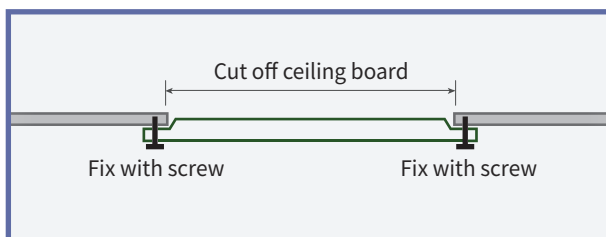
56 % Up



Electricity Cost
\$ 47 → \$ 17

\$ 30 Down

INSTALLATION TYPE



M Bar

Cut off ceiling board, then fix the panel light with screw



T Bar

Panel light will be fixed on T-bar structure