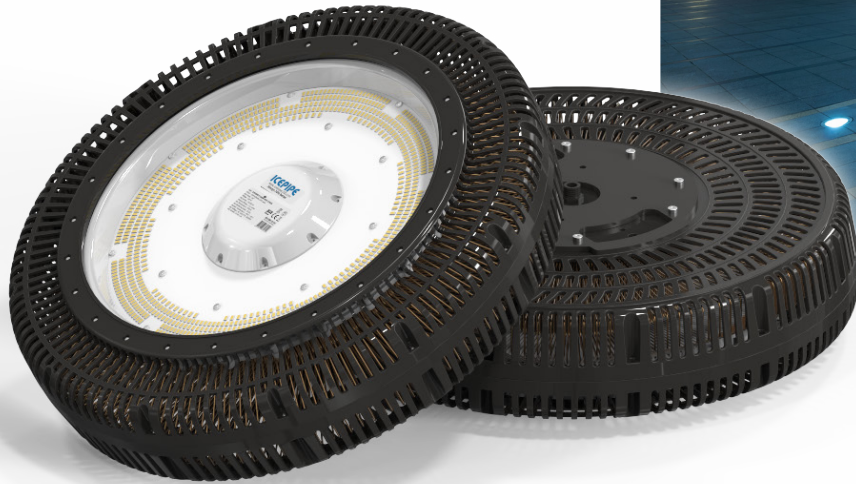




ICEPIPE LED LIGHTING

# CD4010

- 300 W
- 400 W

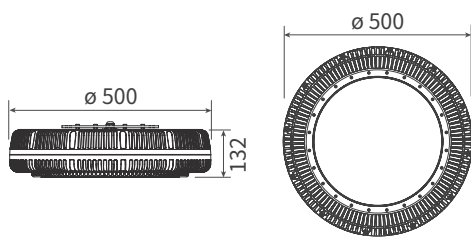


External Driver



## DIMENSION

- Size :  $\varnothing 500 \times 132$  mm
- Weight : 7.5 kg (Driver not incl.)



## FEATURES

- Simple and convenient maintenance with external driver
- LED replacement for 600W~1kW MH
- IP67 available for outdoor waterproof usage
- Compact & versatile design with 360° installation angle
- Rounded light distribution ensures excellent uniformity
- Flicker-free for eye comfort
- Embedded fire protection system and surge protector
- Superb heat dissipation through ICEPIPE FDP Technology
- Ultraviolet free, no mercury and lead-free RoHS Compliance

## APPLICATION



Building Exterior



Outdoor Sports Facilities



Outdoor Parking Lot



Gymnasium

## SPECIFICATION

CCT : **Standard** 5,700 K / 3,000 K **Option** 5,000 K / 4,000 K / 2,700 K

Model No.	CD4010-300W	CD4010-400W	
Wattage	300 W	400 W	
Luminous Efficacy	120 lm/W	120 lm/W	
Total Lumen	36,000 lm	48,000 lm	
Replacement	MH 600 W	MH 1,000 W	
External Driver	ELG-200 x 2	ELG-200 x 2	HLG-480H x 1
Size	7.5 kg (16.5 lbs) *Driver not incl.		
Weight	ø 500 x 132 mm		
CCT	5,700 K		
CRI	82 Ra	75 Ra	
Voltage	AC 100 - 240 V		
Frequency	50/60 Hz		
Installation Angle	360°		
PF	> 0.9		
THD	< 15%		
Protection Circuit	4 kV	2 kV	
Material	Polycarbonate, STS, Tempered Glass		
Heatsink	Copper ICEPIPE Heatsink		
Operating Temperature	-30°C ~ 50°C (-22°F ~ 122°F)		
IP Rating	IP67		
LED Package Life time	50,000 hours (25°C) <small>*LED package life time according to industry standard (LM80), high operating temperature may shorten life span of LED package and LED lamp.</small>		

**Ultra light LED floodlight which is installable at indoor and outdoor with various mounting options**



LED HIGH BAY

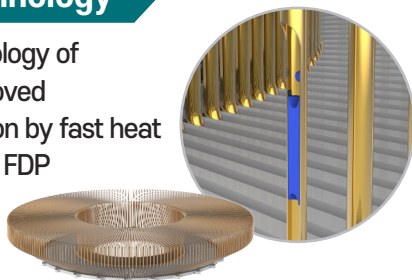
LED FLOOD LIGHT

LED BULB

LED FLAT PANEL LIGHT

### FDP Technology

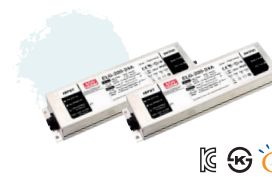
Patent technology of ICEPIPE-Improved heat dissipation by fast heat transfer using FDP



### 400W External Driver

① ELG-200 x 2

② HLG-480H x 1  
\* CD4010 Lens type



## COVER OPTIONS

Type	Standard	Option					
Cover							
	Clear	Lens				Dome Diffuser 2	Diffuser Glass 2
Beam Angle <small>LIGHT DISTRIBUTION CURVE</small>							
	100°	20°	30°	45°	60°	130°	110°