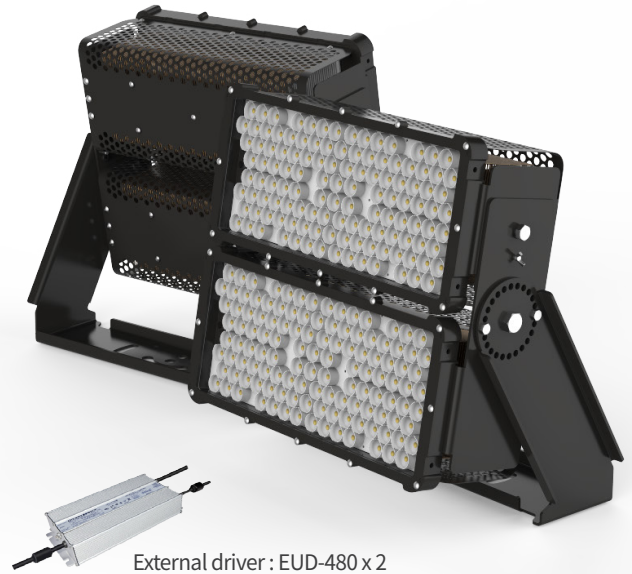


# LED FLOOD LIGHT RCT-800A

External Driver



- External driver for safe & easy repair
- Irradiation distance has been extended with narrow beam angle (10°)
- Replace MH 2 kW
- Excellent heat dissipation by ICEPIPE FDP technology
- Improved durability by metal housing & glass cover
- IP67 (driver & lamp) for outdoor use
- Eco-friendly & RoHS compliant (UV/Lead/Mercury-free)



External driver : EUD-480 x 2

## SPECIFICATION

### ELECTRICAL

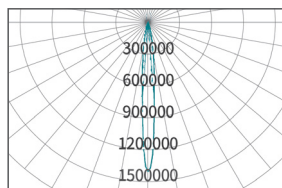
|                    |          |
|--------------------|----------|
| Wattage            | 800 W    |
| Power Input        | AC 220 V |
| Frequency          | 50/60 Hz |
| Power Factor (PF)  | > 0.9    |
| THD                | < 15%    |
| Protection Circuit | 6 kV     |

### CONSTRUCTION

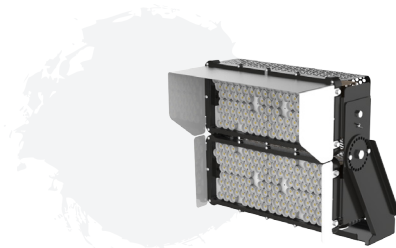
|                       |                              |
|-----------------------|------------------------------|
| Size                  | 544 x 290 x 520 mm           |
| Weight                | 24 kg *Driver not incl.      |
| Material              | Steel                        |
| Heatsink              | Copper ICEPIPE Heatsink      |
| IP Rating             | IP67                         |
| Operating Temperature | -30°C ~ 50°C (-22°F ~ 122°F) |
| Installation Angle    | 360°                         |

### OPTICS

|                       |  |
|-----------------------|--|
| Total Lumen           | 92,000 lm  |
| Efficacy              | 115 lm/W   |
| Replacement           | MH 2 kW  |
| CCT                   | 5,700 K  |
| LED Package Life time | 50,000 hours (25°C)<br>*LED package life time according to industry standard (LM80).<br>*High operating temperature may shorten life span of LED package and LED lamp. |
| CRI                   | 75 Ra  |
| Beam Angle            | 10°  |



## COVER OPTION : Sun visor

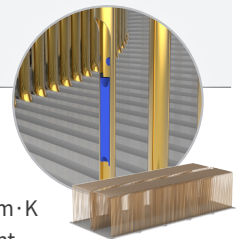


## TECHNOLOGY

### 1. FDP Technology

Patent technology of ICEPIPE-Improved heat dissipation by fast heat transfer using FDP

- The fastest heat transfer rate by excellent air flow
- Sufficient heat dissipation area
- ICEPIPE's thermal conductivity = 40,000 W/m·K
- Less raw materials used reducing the weight and production cost



### 2. Clamping Technology

Unique heat dissipation technology using directional and elastic clamps

- Mechanical coupling to use oscillating capillary tube heatsink as heat dissipation material
- Mechanical bonding of heating part and heatsink made excellent durability
- Pressurized assembly by using elastic deformation of clamp
- Improved heat dissipation performance and reduced material cost compared to conventional adhesive (epoxy, etc.) bonding methods



## APPLICATION



Golf Course



Stadium

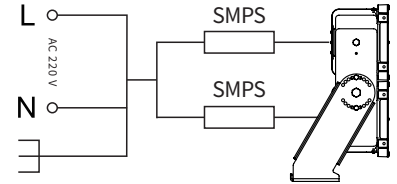
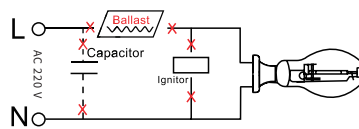


Port



Outdoor Facilities

## INSTALLATION



### Step 1.

Turn off the power before installation.  
Remove the old ballast, capacitor and ignitor  
(if existing)

### Step 2.

Connect the wire from the supply to the fixture and  
make sure the ground from the supply is connected  
to the ground from the fixture.

## PACKING

| Dimension                          |
|------------------------------------|
| (Unit : mm)                        |
| · Size : 544 x 290 x 520 mm        |
| · Weight : 24 kg *Driver not incl. |
|                                    |

| ① Single Unit Box |
|-------------------|
| (Unit : mm)       |
|                   |
|                   |

| ② Pallet    |
|-------------|
| (Unit : mm) |
|             |
|             |

| Type          | ① Single Unit Box  | ② Pallet              | 20ft Container-Palletized | Remarks  |
|---------------|--|-----------------------|---------------------------|--|
| Quantity      | 2<br>(product box : 1, bracket box : 1)                    | 12                    | 120 (10 Pallets)          |  |
| Dimension(mm) | · product : 550 x 600 x 300<br>· bracket : 155 x 550 x 415 | 1,100 x 1,200 x 1,360 | 2,200 x 6,000 x 1,360     | [1 Pallet]<br>· product : 2R X 2R X 3L = 12 pcs<br>· bracket : 2R X 3R X 2L = 12 pcs<br>· total : 12 set |
| GWT(kg)       | 30   | 360                   | 3,600                     |  |
| CBM           | · product : 0.099<br>· bracket : 0.035<br>· total : 0.134  | 1.608                 | 16.08                     |  |

## ⚠ WARNINGS

- Do not use with direct current and ballast.
- This lamp is non-dimmable, do not connect with dimmer
- This lamp must be installed straight downward and cannot be installed in different orientation.
- Do not install the lamp in an enclosed space
- Do not install on any other shade that is not provided by ICEPIPE.
- Please read the instruction manual carefully before installation.



\* Please refer to our full warranty terms and contact your sales representative for details.

