

Result

Report Number	Sample Name	Sample Number	Test Standard

Test Item	Unit	Result	Notice
Beam Distribution Test		See Attachement	
ATHD	%	0.0	
CIE 1931 Cx, Cy		0.0000 , 0.0000	
Correlated Color Temperature	K	0	
Ra		0	
Power Factor		0.992	
Input Voltage	V	220.03	
Input Current	A	5.449	
Input Watt	W	1189.7	
Lamp Flux	lm	168479.1	
Efficient	lm/W	141.61	
luminous Intensity (Max , Center)	cd	626394 , 626394	
Illuminance	lx	626394	1 m
		156599	2 m
		69599	3 m

* This test result is for the sample provided by the client.

* Sample photo

Click to load image

Luminaire

Lamp

No. of lamps	1	Voltage (V)	220.03
Lamp flux (lm)	168479	Current (A)	5.4493
Total flux (lm)	168479	Power Factor	0.9923

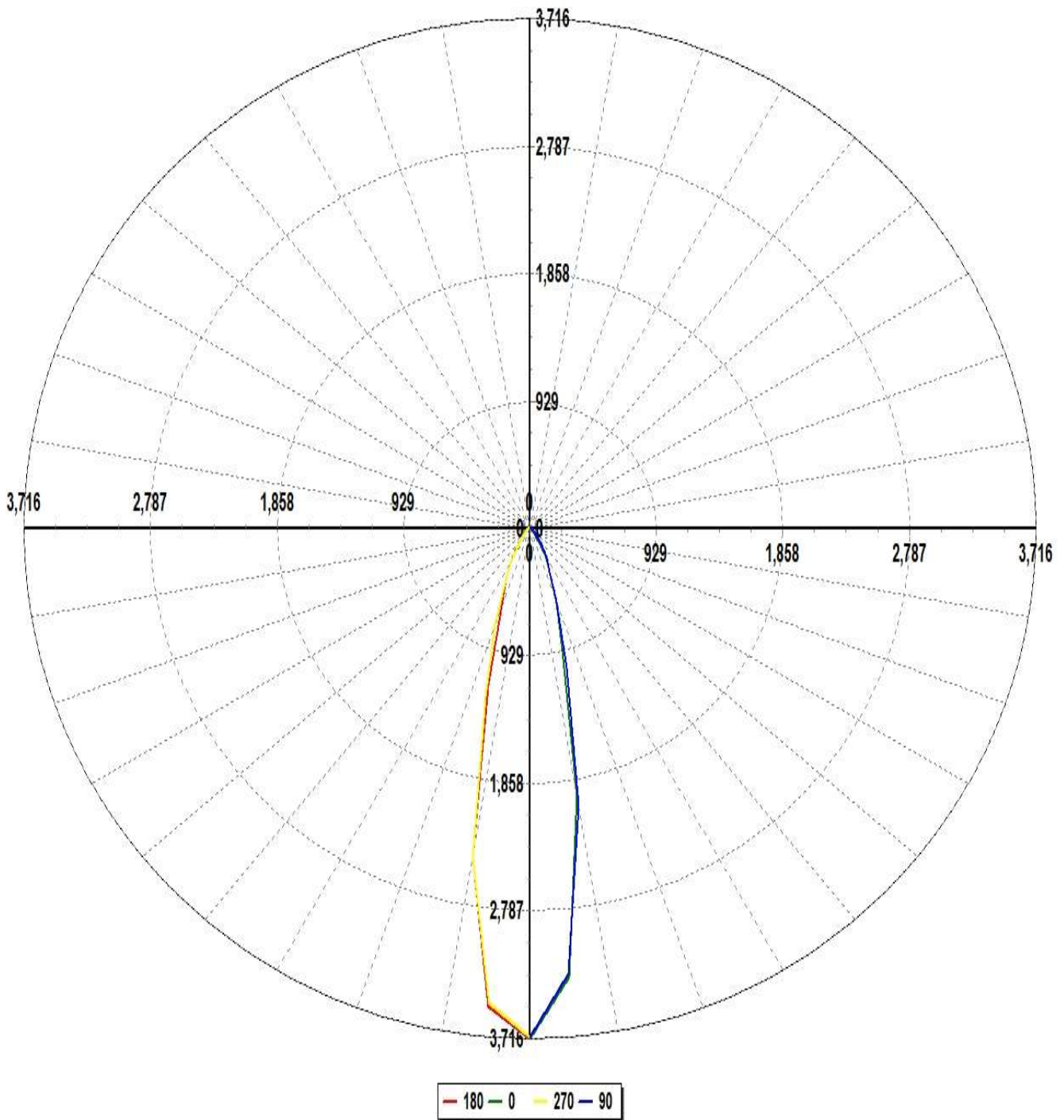
Report

Filename 1.jdt

Operator

Date 2021-09-01 오후 3:29:58

Luminous Intensity Distribution



Luminaire

Lamp

No. of lamps	1	Voltage (V)	220.03
Lamp flux (lm)	168479	Current (A)	5.4493
Total flux (lm)	168479	Power Factor	0.9923

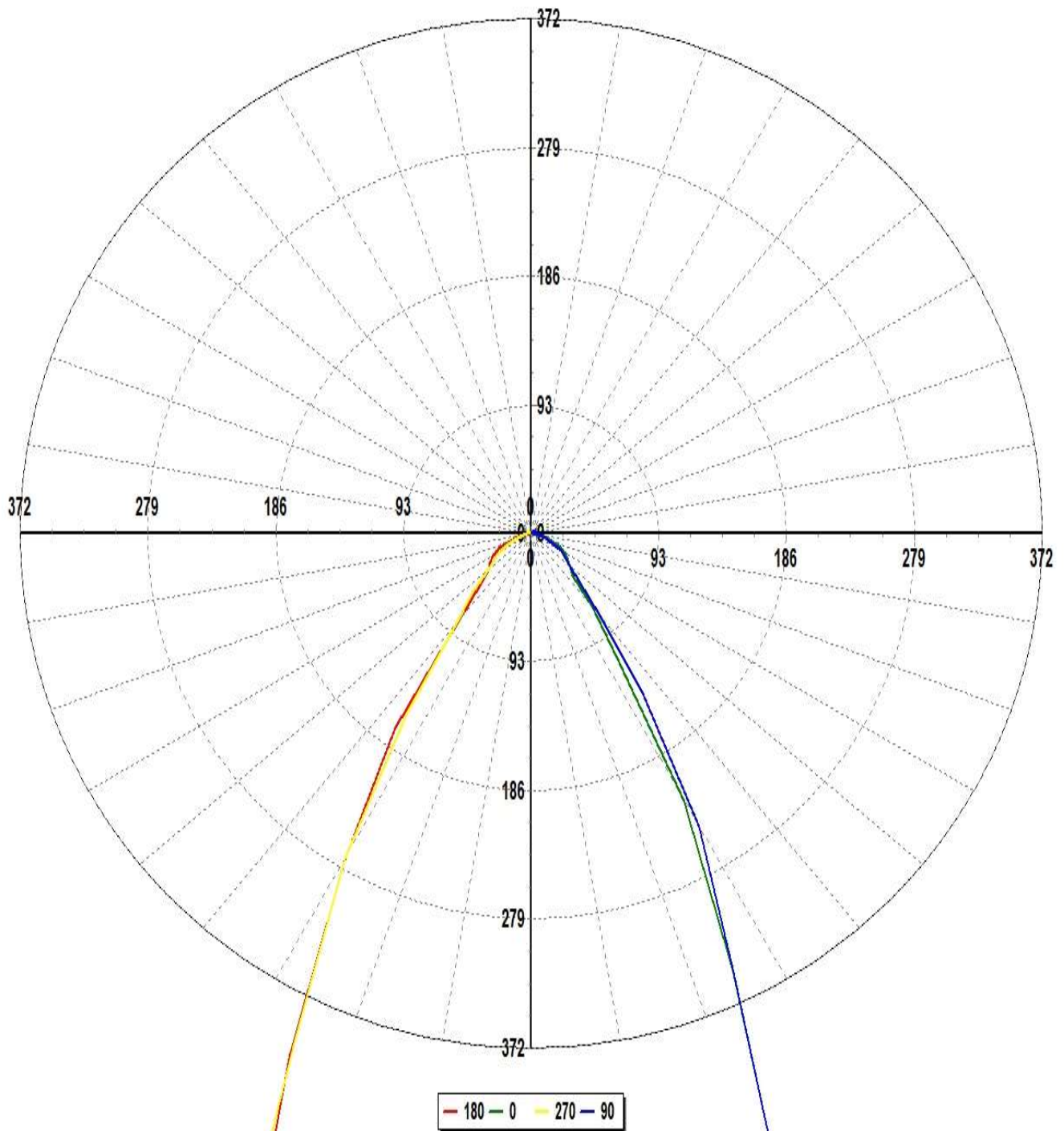
Report

Filename 1.jdt

Operator

Date 2021-09-01 오후 3:29:58

Luminous Intensity Distribution (Lowest 10%)



Luminaire

Lamp

No. of lamps	1	Voltage (V)	220.03
Lamp flux (lm)	168479	Current (A)	5.4493
Total flux (lm)	168479	Power Factor	0.9923

Report

Filename	1.jdt
Operator	
Date	2021-09-01 오후 3:29:58

Luminous Intensity Data

Maximum (cd) : 626394

Minimum (cd) : 47

G/C	0	10	20	30	40	50	60	70	80
0	626394.3	625833.5	625169.3	625035.8	625028.6	625170.8	625035.6	625126.8	625032.4
5	552376.4	551547.1	550911.1	550587.1	550125.4	549857.1	549169.2	548524.5	547849.6
10	333083.3	334173.3	333565.3	337431.6	337585.6	340722.6	340920.1	343932.2	342526.8
15	155483.6	156185.7	155006.5	156454.5	157506.8	162574.5	164677.8	169683	172764.3
20	96215.05	86219.45	95078.38	85327.84	95140.02	85809.82	99468.23	91089	105288.6
25	58586.98	54884.15	58045.83	53672.84	58288.8	55405.45	59231.54	56531.39	61368.24
30	37448.77	38376.7	39294.05	40878.56	41358.06	42385.3	41748.57	41315.36	40721.76
35	18336.01	19314.59	21195.56	24248.28	26726.47	27396.59	26095.19	24977.59	23822.78
40	11678.36	10147.76	10649.81	12827.73	14896.77	16067.12	15022.93	14008.54	13175.35
45	7200.98	7239.85	8070.1	7993.13	10357.63	9742.85	10771.7	8801.88	9480.27
50	6202.98	6023.85	6153.59	6219.37	6659.6	6563.28	6822.74	6304.73	6415.67
55	5543.8	5517.51	5409.52	5434.98	5464.34	5525.81	5416.41	5266.39	5158.48
60	4863	4590.75	4441.14	4409.4	4365.96	4309.27	4133.5	4037.61	4012.12
65	3685.18	3514.49	3351.32	3329.25	3240.91	3109.88	3004.93	2924.89	2872.38
70	2357.3	2335.73	2283.04	2218.43	2096.75	2048.99	1982.53	1911.01	1846.68
75	1664.03	1351.96	1602.19	1235.43	1450.35	1124.13	1347.11	1023.24	1230.12
80	591.01	487.89	553.77	409.07	465.21	340.36	403.79	295.36	559.01
85	259.65	132.54	236.95	106.05	190.23	86.41	156.74	74.44	68.99
90	50.98	52.88	51.52	54.01	52.17	54.14	51.55	53.13	50.21
95	61.21	64.26	62.07	65.91	63.38	66.58	63.17	65.71	61.72
100	87.26	98.34	87.78	99.42	89.16	100.37	89.38	100.36	88.4
105	121.03	120.05	120.72	120.49	121.54	121.53	122.53	122.25	122.58
110	168.2	166.7	167.22	166.7	168.44	168.95	171.12	171.82	172.78
115	237.72	236.17	237.07	237.6	240.58	242.47	246.36	248.31	250.25
120	350.35	349.27	350.64	352.15	356.08	359.19	363.38	366.23	368.87
125	520	520.1	519.08	521.66	522.11	525.58	526.52	530.34	529.65
130	647.29	795.29	644.54	727.52	642.66	723.68	643.48	720.23	644.21

Luminaire

Lamp

No. of lamps	1	Voltage (V)	220.03
Lamp flux (lm)	168479	Current (A)	5.4493
Total flux (lm)	168479	Power Factor	0.9923

Report

Filename	1.jdt
Operator	
Date	2021-09-01 오후 3:29:58

Luminous Intensity Data (Continued)

Maximum (cd) : 626394

Minimum (cd) : 47

G/C	90	100	110	120	130	140	150	160	170
0	625082.9	624965.5	625066.2	625049.1	625377.6	625232	625272.1	624974.6	624723.4
5	547926.6	547291.9	547754.5	548048.1	548728.3	548903.2	549819.6	549911.4	550398.4
10	344235.8	342559	343644.5	340572.2	342017	340151.7	340608.9	338026.7	339366.9
15	176144.1	175551.2	174692.6	170883.4	169775.1	166543.4	165654.1	162536.8	163064.5
20	95463.91	107068.7	94169.59	104087.5	91045.91	99726.06	91057.97	101928.7	92560.42
25	58507.84	63675.79	59101.8	62218.19	58797.18	62475.93	58821.73	62415.68	60139.79
30	41289.48	41469.79	42773.06	43140.2	44845.15	44908.71	45641.47	45107.32	44375.93
35	23748.55	23937.05	25779.96	27719.83	29852.27	30577.93	29277.3	26814.02	25009.13
40	13206.41	13372.04	14590.84	16142.95	18171.07	18194.44	16435.54	13588.15	11999.95
45	8428.54	9619.48	9119.95	11611.2	11338.47	11015.95	9640.95	9399.95	8033.45
50	6237.2	6501.38	6453.23	7240.74	7780.47	8466.58	7140.47	6740.82	6454.3
55	5217.92	5190.64	5344.77	5642.09	5592.1	5861.1	5553.75	5717.79	5850.35
60	4252.26	4038.13	4071.3	4216.16	4452.53	4520.57	4582.27	4611.97	4745.43
65	3038.59	2889.76	2928.83	3022.89	3140.98	3287.94	3411.45	3417.65	3543.25
70	1869.82	1847.64	1901.91	1970.1	2048.88	2096.76	2249.08	2301.69	2355.03
75	975.57	1233.57	1014.47	1333.25	1113.84	1444.67	1235.04	1607.87	1349.51
80	273.15	559.86	290.8	398.33	335.89	456.93	406.65	549.68	480.82
85	69.79	68.64	73.43	154.35	84.57	187.41	103.59	233.1	127.46
90	51.82	49.52	51.83	50.09	52.2	50.09	51.62	49.45	50.73
95	64.2	60.81	63.89	60.95	63.7	60.42	62.43	58.84	60.46
100	99.02	87.02	97.32	85.79	95.36	84.13	92.93	81.67	90.3
105	121.27	120.86	118.73	117.65	115.5	114.44	112.38	111.51	109.91
110	171.63	171.01	167.4	165.22	161.42	159.15	155.93	155.01	152.95
115	249.27	248.2	243.44	239.75	233.89	229.64	224.46	221.99	218.83
120	368.39	366.74	361.52	356.28	349.54	343.88	337.33	333.28	329.33
125	531.32	527.45	525.03	519.12	515.38	509.08	505.69	500.54	499.17
130	718.99	679.74	715.4	674.48	713.03	668.95	710.65	666.03	709.35

Luminaire

Lamp

No. of lamps	1	Voltage (V)	220.03
Lamp flux (lm)	168479	Current (A)	5.4493
Total flux (lm)	168479	Power Factor	0.9923

Report

Filename	1.jdt
Operator	
Date	2021-09-01 오후 3:29:58

Luminous Intensity Data (Continued)

Maximum (cd) : 626394

Minimum (cd) : 47

G/C	180	190	200	210	220	230	240	250	260
0	626394.3	625833.5	625169.3	625035.8	625028.6	625170.8	625035.6	625126.8	625032.4
5	588495.3	587223.3	588257.4	587147	588423.9	587183.1	588240.3	586572.6	587569.9
10	408728.1	405713.3	409816.6	407185.6	411257.1	408412.6	412910.1	408756	411883.7
15	200159.8	198673.8	200833.2	201575.2	205955.9	206660.7	210119.6	211179.4	215254.3
20	106285.8	119095.9	105032.1	117074.1	103468.3	120009.5	107440.3	124525	111218.4
25	70034.45	69194.88	64334.42	67688.56	63388.3	66886.5	63631.65	68572.2	64102.21
30	45735.47	49646.62	49597.02	48971.51	49321.34	48973.84	47772.35	46631.71	46317.58
35	29066.16	29412.8	31100	32947.7	34020.09	33050.08	31086.14	28867.15	27471.22
40	13618.4	14034.91	16042.28	18564.04	20449.41	19814.03	18000.88	16047.08	15088.58
45	8650.39	9712.74	9075.1	10355.84	11809.34	11858.29	10697.54	11039.05	8972.4
50	6694.89	6824.47	7033.32	8048.85	7913.83	8943.67	7489.06	6927.6	6397.05
55	6170.26	6086.61	5770.91	6035.57	5877.91	6062.19	5590.64	5551.89	5440.13
60	5401	5023.59	4962.39	4867.35	4862.66	4719.96	4530.44	4308.96	4329.13
65	4201.71	3859.58	3760.85	3709.15	3650.48	3433.57	3331.28	3189.68	3203.16
70	2707.96	2650.74	2611.85	2530.31	2436.5	2324.06	2258.64	2124.1	2101.46
75	1620.53	1596.77	1570.43	1784.76	1404.57	1628.38	1292.62	1508.84	1187.03
80	782.22	1020.44	734.09	665.13	512.08	582.03	449.34	520.48	401.23
85	151.75	393.07	133.83	328.99	155.53	270.91	130.39	237.05	117.35
90	48.35	47.1	48.19	46.89	48.37	46.97	48.23	46.52	47.74
95	55.43	53.55	55.77	54.25	56.87	54.98	57.23	54.8	57.11
100	69.23	69.72	70.27	71.52	72.31	73.58	82.09	74.46	83.53
105	104.42	93.12	105.03	94.69	107.19	97.36	98.05	99.84	100.56
110	126.47	127.13	126.68	127.74	128.63	130.96	132.67	135.75	137.39
115	173.15	174.18	173.86	175.18	176.76	180.39	183.49	188	190.61
120	245.06	246.95	247.65	250.69	254.1	259.69	264.51	269.88	274.21
125	367.55	368.42	371.01	373.83	378.5	383.3	388.94	394.62	399.17
130	548.59	509.48	549.99	512.2	551.52	517.22	554.7	523.74	560.12

Luminaire

Lamp

No. of lamps	1	Voltage (V)	220.03
Lamp flux (lm)	168479	Current (A)	5.4493
Total flux (lm)	168479	Power Factor	0.9923

Report

Filename	1.jdt
Operator	
Date	2021-09-01 오후 3:29:58

Luminous Intensity Data (Continued)

Maximum (cd) : 626394

Minimum (cd) : 47

G/C	270	280	290	300	310	320	330	340	350
0	625082.9	624965.5	625066.2	625049.1	625377.6	625232	625272.1	624974.6	624723.4
5	585773.9	586587.6	585080.8	586762.8	586148.8	587990.2	586947.8	588194.6	586651.6
10	408112.7	411244.6	406839.7	409581.1	404776	407116.3	402251.5	404846.7	400294.4
15	213762.2	214150.7	209395.2	207226.3	202646.2	200946.4	195622.7	194608.1	191496.6
20	126034.4	108089.2	120589.2	102783.5	113151.3	97473.14	110891.6	98236.04	111641.1
25	68999.59	63133.56	65951.49	59723.65	63593.02	59819.81	63112.34	58857.12	64023.1
30	45435.42	45141.77	44997.67	44908.33	45329.71	44877.02	44789.7	44474.77	43596.23
35	26595.38	26786.27	27706.81	29265.99	30061.55	30198.05	28137.15	25486.28	23433.38
40	14551.05	14833.13	15625.43	17259.76	18178.39	17588.9	15142.03	12829.32	11451.46
45	10152.86	8927.15	10853.89	10394.34	11017.23	10219.39	10205.21	8070.86	8622.18
50	6634.97	6375.08	6853.96	7276.49	8353.06	7212.41	6786.17	6309.53	6357.18
55	5431.21	5402.01	5470.62	5480.67	5789.09	5595.31	5718.5	5619.08	5755.12
60	4493	4262.93	4260.6	4455.94	4574.12	4675.98	4690.53	4758.28	4851.26
65	3372.86	3167.76	3155.92	3275.08	3361.61	3561.75	3617.71	3651.08	3787.75
70	2102.47	2087.06	2108.13	2236.97	2308.41	2396.96	2513.14	2562.34	2607.38
75	1475.7	1191.23	1501.65	1287.16	1623.29	1404.08	1779.2	1553.63	1583.96
80	490.15	404.3	525.92	452.37	582.79	520.9	672.81	737.65	1016.53
85	219.5	118.67	238.14	132.51	274.02	160.49	333.03	139.33	397.64
90	46.55	48.3	47.41	49.44	48.38	50.24	48.7	49.66	48.38
95	55	58	56.15	59.24	57.11	59.65	56.84	58.29	55.55
100	75.57	85.22	77.03	86.01	77.49	85.69	76.54	83.82	74.57
105	102.34	102.58	103.73	103.07	103.28	102.23	102.07	100.63	100.86
110	139.7	140	141.06	139.86	139.51	138	137.9	136.89	137.86
115	193.41	193.88	194.99	193	191.83	189.24	188.3	186.72	187.65
120	277.27	277.78	278.57	275.65	272.94	269.12	266.01	263.05	262.24
125	402.04	402.61	402.52	400.61	397.46	394.5	390.57	387.27	385.29
130	529.4	563.5	531.02	565.43	531.52	566.78	528.73	565.36	526.34

Luminaire

Lamp

No. of lamps	1	Voltage (V)	220.03	Report	
Lamp flux (lm)	168479	Current (A)	5.4493	Filename	1.jdt
Total flux (lm)	168479	Power Factor	0.9923	Operator	
				Date	2021-09-01 오후 3:29:58

Luminous Intensity Data (Continued)

Maximum (cd) : 626394

Minimum (cd) : 47

G/C	360
0	626394.3
5	552376.4
10	333083.3
15	155483.6
20	96215.05
25	58586.98
30	37448.77
35	18336.01
40	11678.36
45	7200.98
50	6202.98
55	5543.8
60	4863
65	3685.18
70	2357.3
75	1664.03
80	591.01
85	259.65
90	50.98
95	61.21
100	87.26
105	121.03
110	168.2
115	237.72
120	350.35
125	520
130	647.29

Luminaire

Lamp

No. of lamps	1	Voltage (V)	220.03
Lamp flux (lm)	168479	Current (A)	5.4493
Total flux (lm)	168479	Power Factor	0.9923

Report

Filename	1.jdt
Operator	
Date	2021-09-01 오후 3:29:58

Luminous Flux Table

Total Lamp Lumens:	168479
Luminaire Efficiency (lm/W):	169786.50
CIE Classification:	Direct

Elevation	Lumens	Cumulative	Lamp %	Luminaire %
0	3738.77	3738.77	2.22	2.22
5	27149.77	30888.54	18.33	18.33
10	35574.33	66462.88	39.45	39.45
15	26227.74	92690.61	55.02	55.02
20	19371.20	112061.80	66.51	66.51
25	14331.69	126393.50	75.02	75.02
30	12132.08	138525.60	82.22	82.22
35	8554.45	147080.00	87.30	87.30
40	5317.29	152397.30	90.45	90.45
45	3752.10	156149.40	92.68	92.68
50	2902.11	159051.50	94.40	94.40
55	2513.89	161565.40	95.90	95.90
60	2145.14	163710.60	97.17	97.17
65	1669.81	165380.40	98.16	98.16
70	1150.20	166530.60	98.84	98.84
75	740.22	167270.80	99.28	99.28
80	283.82	167554.60	99.45	99.45
85	96.26	167650.90	99.51	99.51
90	27.31	167678.20	99.52	99.52
95	32.54	167710.80	99.54	99.54
100	45.62	167756.40	99.57	99.57
105	58.18	167814.60	99.61	99.61
110	77.35	167891.90	99.65	99.65
115	105.16	167997.10	99.71	99.71
120	146.60	168143.70	99.80	99.80
125	203.75	168347.40	99.92	99.92
130	131.73	168479.10	100.00	100.00

Luminaire

Lamp

No. of lamps	1	Voltage (V)	220.03
Lamp flux (lm)	168479	Current (A)	5.4493
Total flux (lm)	168479	Power Factor	0.9923

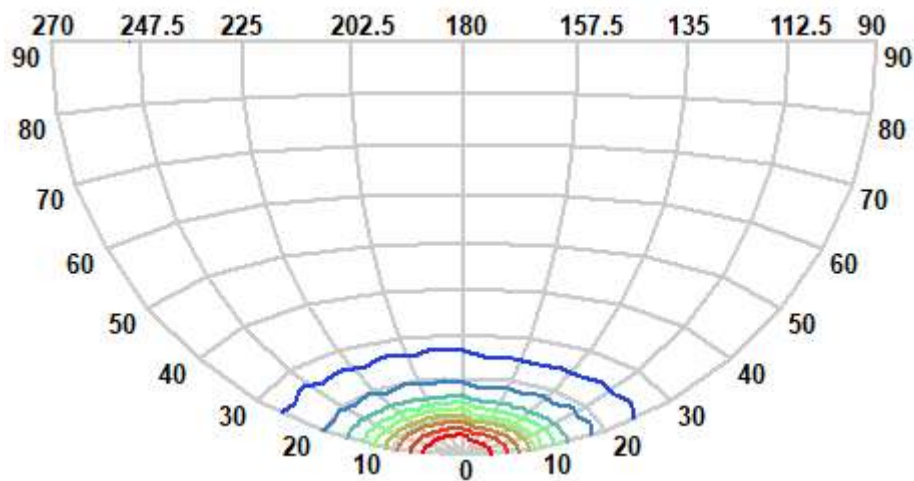
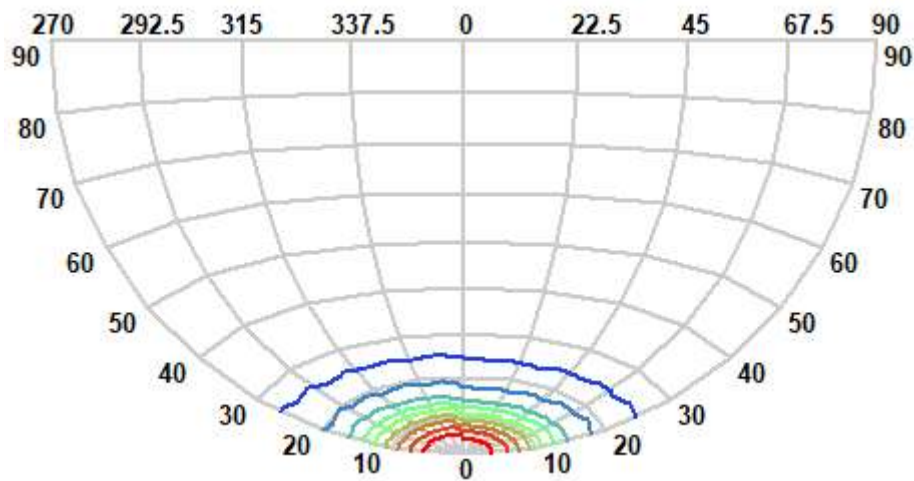
Report




Filename 1.jdt

Operator

Date 2021-09-01 오후 3:29:58

IsoCandela (Type C)



	47	~	62681		313220	~	375855
	62681	~	125316		375855	~	438490
	125316	~	187951		438490	~	501125
	187951	~	250586		501125	~	563760
	250586	~	313220		563760	~	626394

Luminaire

Lamp

No. of lamps	1	Voltage (V)	220.03
Lamp flux (lm)	168479	Current (A)	5.4493
Total flux (lm)	168479	Power Factor	0.9923

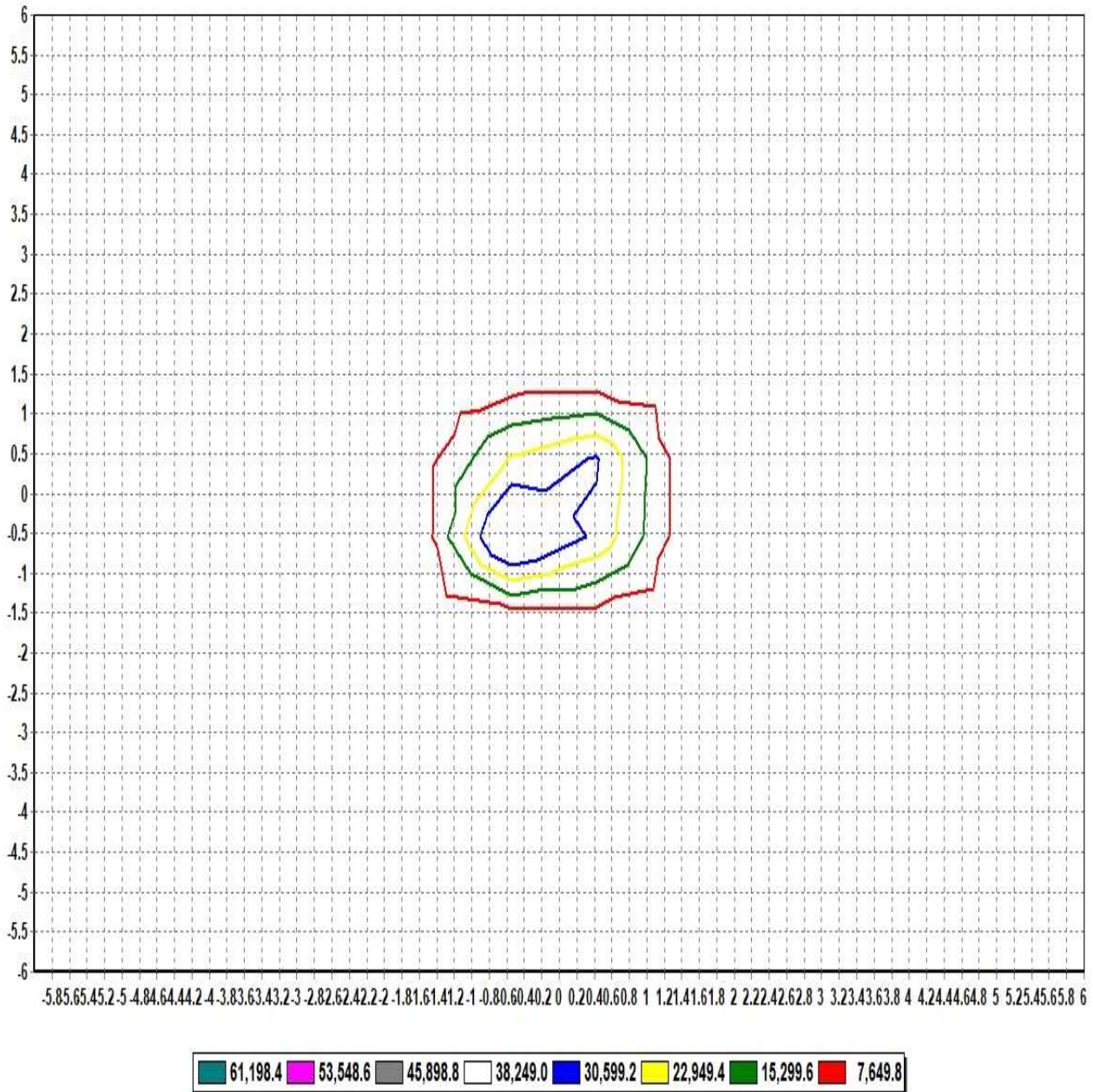
Report

Filename 1.jdt

Operator

Date 2021-09-01 오후 3:29:58

IsoLux Diagram (Ground)



Pole Height (m): 2.7

Area Width (m): 12

Total Optical Solution Provider

Luminaire

Lamp

No. of lamps	1	Voltage (V)	220.03
Lamp flux (lm)	168479	Current (A)	5.4493
Total flux (lm)	168479	Power Factor	0.9923

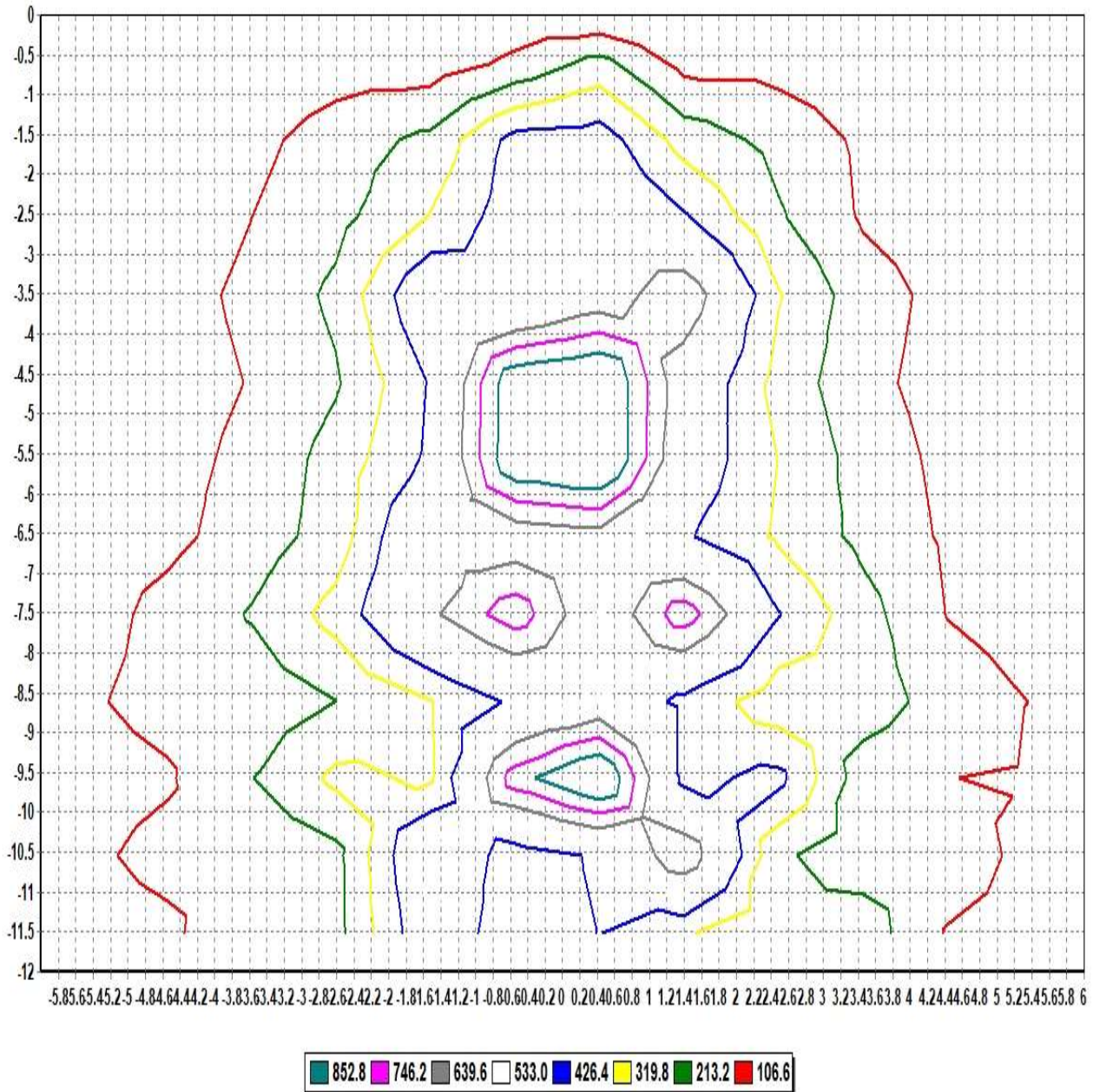
Report

Filename 1.jdt

Operator

Date 2021-09-01 오후 3:29:58

IsoLux Diagram (Wall)



Pole Height (m):	2.7	Wall Distance (m):	2.7
Aiming Plane:	0	Wall Height (m):	12
Total Optical Solution Provider			

Luminaire

Lamp

No. of lamps	1	Voltage (V)	220.03
Lamp flux (lm)	168479	Current (A)	5.4493
Total flux (lm)	168479	Power Factor	0.9923

Report

Filename 1.jdt

Operator

Date 2021-09-01 오후 3:29:58

Illuminance Levels (Ground)

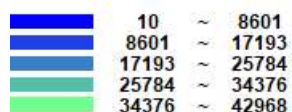
6.00	9.86	14.05	12.04	16.77	30.19	34.85	38.53	34.80	30.67	17.35	12.52	14.48	10.54
5.00	14.07	13.71	31.12	41.21	40.39	67.46	72.15	65.89	40.79	41.88	31.17	14.70	14.50
4.00	13.70	31.43	35.20	76.62	84.74	133.94	145.03	134.30	85.73	75.24	37.26	31.33	14.04
3.00	18.59	46.20	77.76	105.48	175.06	252.74	291.90	266.92	174.92	104.30	75.11	44.82	19.01
2.00	34.41	46.98	91.17	188.61	706.51	1031.19	2557.00	1036.43	569.68	168.28	87.99	47.38	33.67
1.00	39.98	75.48	141.97	275.13	1160.38	4936.68	19335.27	4588.38	808.47	237.00	133.47	73.67	40.08
0.00	49.44	87.10	158.35	306.85	2892.41	21955.43	85925.13	17154.72	2249.44	271.02	145.90	78.31	44.37
-1.00	43.93	81.82	147.27	270.93	1176.72	5422.59	23539.03	5045.18	1108.55	263.71	137.82	75.35	41.48
-2.00	37.54	52.16	97.24	189.99	779.67	1263.68	2823.82	1102.13	715.90	181.31	92.72	49.45	35.66
-3.00	21.48	50.03	82.12	114.74	194.72	290.31	329.89	268.51	178.30	107.61	78.91	47.38	20.55
-4.00	15.99	34.99	41.68	81.98	93.45	140.06	153.71	138.35	87.74	78.22	37.73	32.79	15.31
-5.00	16.39	16.80	34.77	45.91	44.27	70.02	75.42	70.60	43.51	43.20	32.52	15.32	15.16
-6.00	11.92	16.37	14.18	19.45	33.62	37.30	40.95	37.02	31.93	18.52	13.40	15.14	10.81
-6.00	-5.00	-4.00	-3.00	-2.00	-1.00	0.00	1.00	2.00	3.00	4.00	5.00	6.00	

Illum. (Max.) : 85925

Illum. (Min.) : 9.86

Illum. (Avg.) : 1310

All illuminance level values are in lux.



Luminaire

Lamp

No. of lamps	1	Voltage (V)	220.03
Lamp flux (lm)	168479	Current (A)	5.4493
Total flux (lm)	168479	Power Factor	0.9923

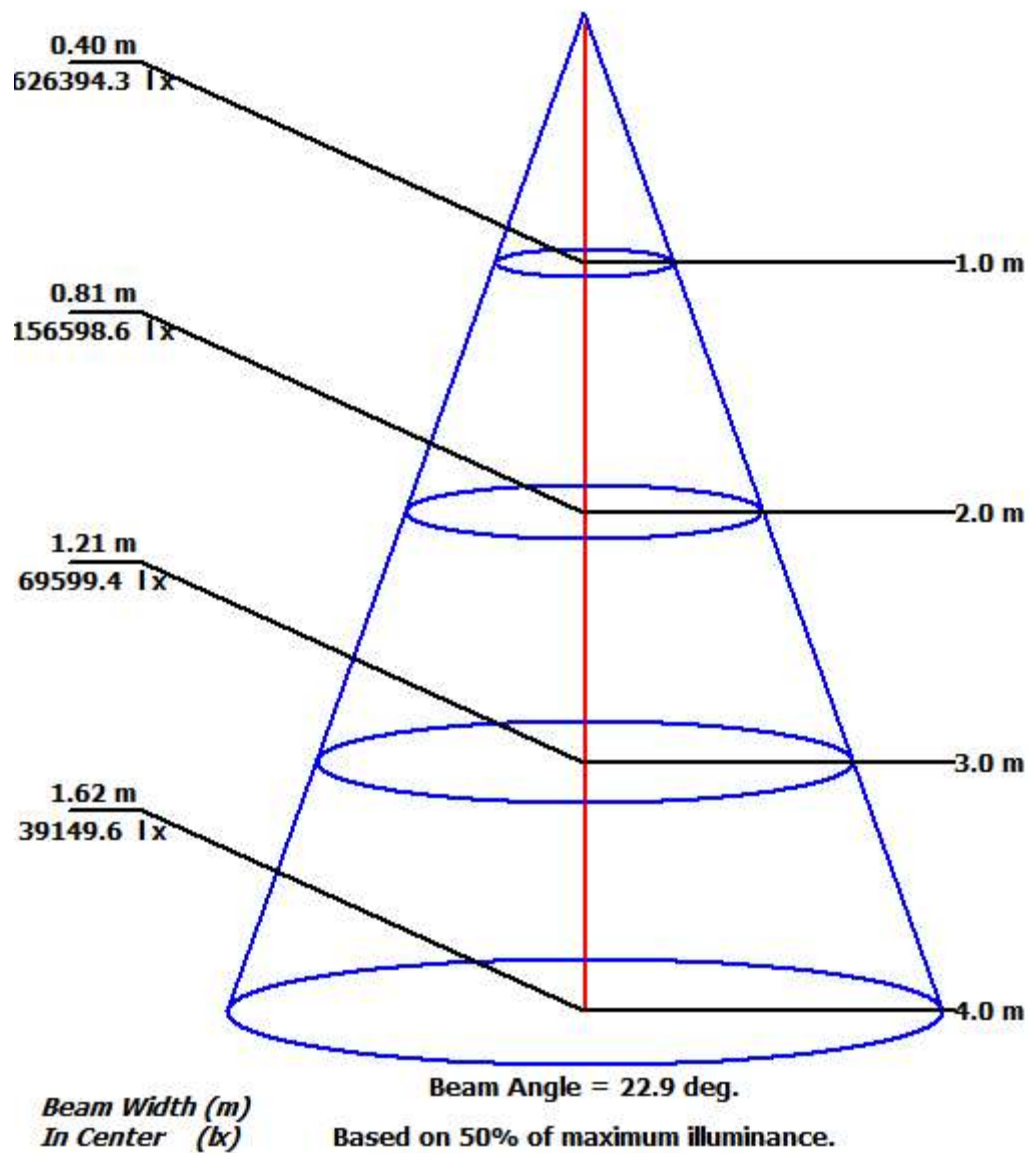
Report

Filename 1.jdt

Operator

Date 2021-09-01 오후 3:29:58

Illuminance Cone Diagram



Luminaire

Lamp

No. of lamps 1 Voltage (V) 220.03

Lamp flux (lm) 168479 Current (A) 5.4493

Total flux (lm) 168479 Power Factor 0.9923

Report

Filename 1.jdt

Operator

Date 2021-09-01 오후 3:29:58

Coefficient of Utilization

	Refl. Ceiling (%)	80%	80%	80%	70%	70%	70%	50%	50%	50%	30%	30%	30%	10%	10%	10%	0%
	Refl. Wall (%)	50%	30%	10%	50%	30%	10%	50%	30%	10%	50%	30%	10%	50%	30%	10%	0%
Eff. Floor Cavity Refl.		20%	20%	20%	20%	20%	20%	20%	20%	20%	20%	20%	20%	20%	20%	20%	20%
Room CR 0		1.17	1.17	1.17	1.14	1.14	1.14	1.09	1.09	1.09	1.04	1.04	1.04	1.00	1.00	1.00	0.98
Room CR 1		1.09	1.07	1.05	1.07	1.05	1.03	1.03	1.01	1.00	0.99	0.98	0.97	0.96	0.95	0.94	0.92
Room CR 2		1.03	0.99	0.96	1.01	0.98	0.95	0.98	0.95	0.93	0.95	0.93	0.91	0.92	0.90	0.89	0.87
Room CR 3		0.97	0.93	0.89	0.96	0.92	0.88	0.93	0.90	0.87	0.91	0.88	0.86	0.88	0.86	0.84	0.83
Room CR 4		0.92	0.87	0.84	0.91	0.87	0.83	0.89	0.85	0.82	0.87	0.84	0.81	0.85	0.82	0.80	0.79
Room CR 5		0.88	0.83	0.79	0.87	0.82	0.79	0.85	0.81	0.78	0.83	0.80	0.77	0.82	0.79	0.77	0.75
Room CR 6		0.84	0.79	0.75	0.83	0.78	0.75	0.82	0.78	0.75	0.80	0.77	0.74	0.79	0.76	0.74	0.72
Room CR 7		0.80	0.76	0.72	0.80	0.75	0.72	0.79	0.75	0.72	0.78	0.74	0.71	0.76	0.73	0.71	0.70
Room CR 8		0.77	0.73	0.69	0.77	0.72	0.69	0.76	0.72	0.69	0.75	0.71	0.69	0.74	0.71	0.68	0.67
Room CR 9		0.75	0.70	0.67	0.74	0.70	0.67	0.73	0.69	0.66	0.73	0.69	0.66	0.72	0.68	0.66	0.65
Room CR 10		0.72	0.68	0.65	0.72	0.67	0.64	0.71	0.67	0.64	0.70	0.67	0.64	0.70	0.66	0.64	0.63