

Result

Report Number	Sample Name	Sample Number	Test Standard

Test Item	Unit	Result	Notice
Beam Distribution Test		See Attachement	
ATHD	%	0.0	
CIE 1931 Cx, Cy		0.0000 , 0.0000	
Correlated Color Temperature	K	0	
Ra		0	
Power Factor		0.994	
Input Voltage	V	220.06	
Input Current	A	6.052	
Input Watt	W	1323.6	
Lamp Flux	lm	190032.1	
Efficient	lm/W	143.57	
luminous Intensity (Max , Center)	cd	713412 , 713412	
Illuminance	lx	713412	1 m
		178353	2 m
		79268	3 m

* This test result is for the sample provided by the client.

* Sample photo

Click to load image

Luminaire

Lamp

No. of lamps	1	Voltage (V)	220.06
Lamp flux (lm)	190032	Current (A)	6.0522
Total flux (lm)	190032	Power Factor	0.9938

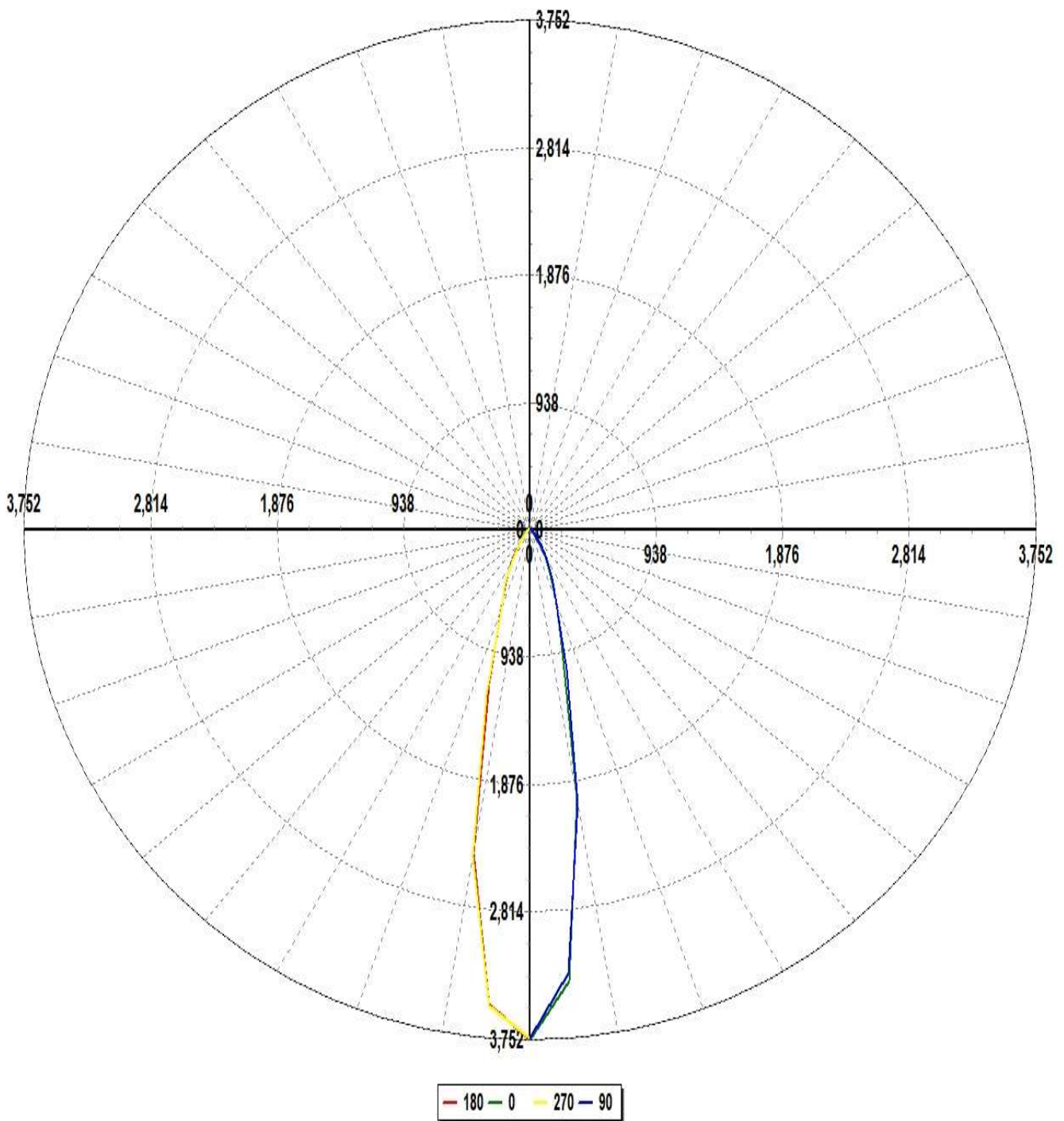
Report

Filename 1.jdt

Operator

Date 2021-09-01 오후 1:50:25

Luminous Intensity Distribution



Luminaire

Lamp

No. of lamps	1	Voltage (V)	220.06
Lamp flux (lm)	190032	Current (A)	6.0522
Total flux (lm)	190032	Power Factor	0.9938

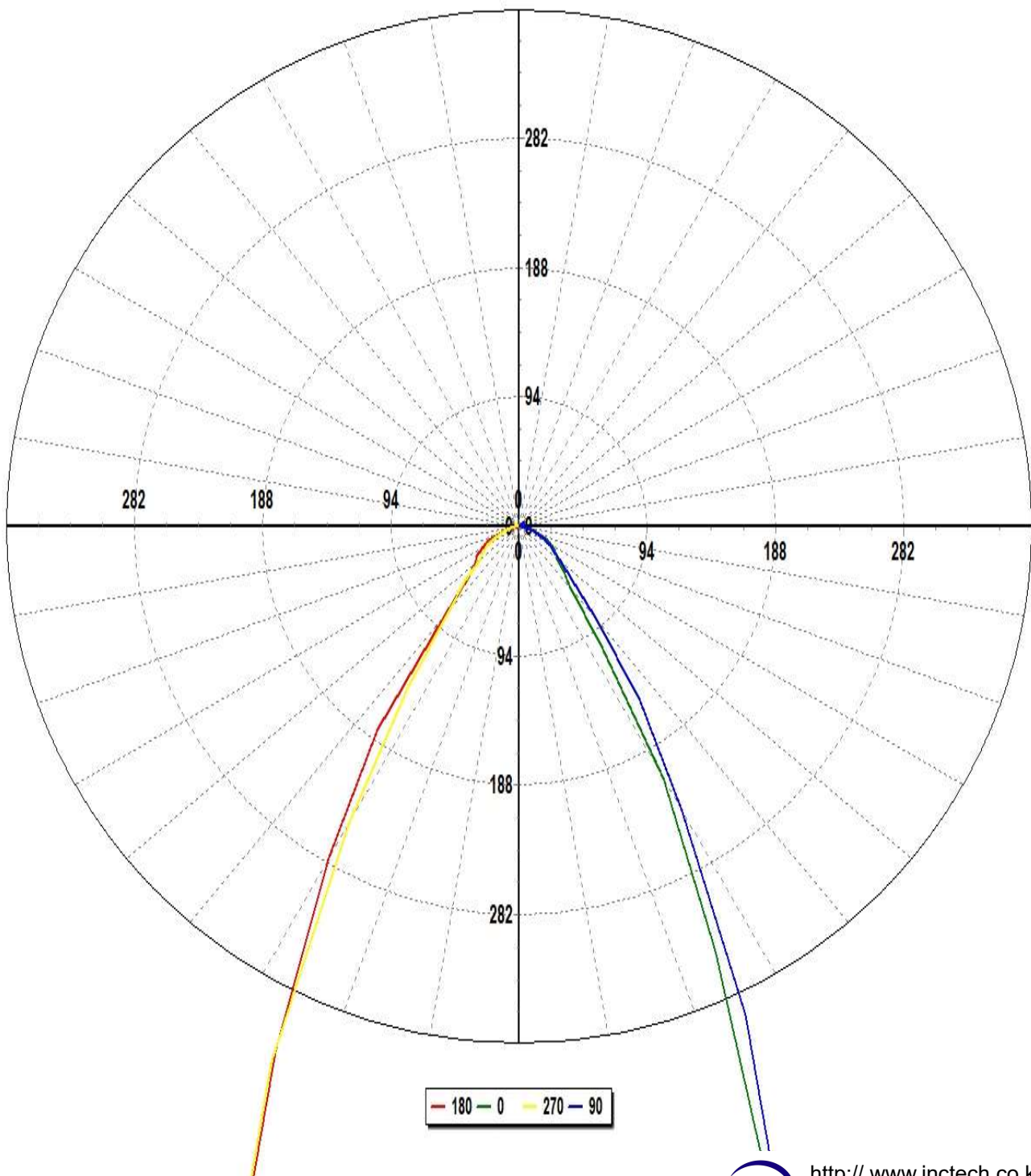
Report

Filename 1.jdt

Operator

Date 2021-09-01 오후 1:50:25

Luminous Intensity Distribution (Lowest 10%)



Total Optical Solution Provider

Luminaire

Lamp

No. of lamps	1	Voltage (V)	220.06
Lamp flux (lm)	190032	Current (A)	6.0522
Total flux (lm)	190032	Power Factor	0.9938

Report

Filename	1.jdt
Operator	
Date	2021-09-01 오후 1:50:25

Luminous Intensity Data

Maximum (cd) : 713412

Minimum (cd) : 52

G/C	0	10	20	30	40	50	60	70	80
0	713412.4	712546.1	711657.6	711414.8	711324.7	711395.4	711255.4	711354.9	710767.1
5	632986.9	632010.3	630488.8	629721.5	628350.3	627366	625592.1	624295.8	622700.9
10	381556.7	381946.4	381281.9	385330.5	385354.9	387981.4	387291.1	389963.2	387464.6
15	177033	178522.2	177377.2	179189.1	180130.8	185595.7	187826.9	193495.3	196970.1
20	108268.4	97445.23	108438.6	97490.93	108871.1	98847.44	114529.5	105232	121480.9
25	64591.11	60781.32	65197.99	60807.1	66650.43	63758.54	68781.13	70852.68	72157.12
30	40319.96	41856.2	43511.31	45877.3	47068.17	49147.43	48971.13	45093.77	48867.89
35	19683.69	20938.07	23127.84	27027.68	30466.1	31934.87	31058.5	30190.06	29084
40	11061.41	11260.15	11845.33	14342.54	17000.44	18914.33	18087.9	17025.02	16102.93
45	8886.35	8136.97	9024.15	9031.77	10288.2	11466.19	11229.84	10609.59	10131.89
50	6946.79	6765.78	6932.75	7301.23	8277.42	8069.81	8906.5	7864.31	8298.74
55	6211.27	6212.98	6090.66	5959.26	6252.1	6108.98	6353.1	5899.89	6108.14
60	5410.5	5131.41	5004.52	4990.33	4976.9	4956.31	4810.25	4735.63	4721.37
65	4053.43	3929.98	3759.54	3751.6	3666.57	3545.88	3463	3418.16	3367.86
70	2581.01	2576.9	2532.46	2463.55	2336.02	2308.4	2260.84	2218.25	2161.44
75	1787.4	1440.32	1738.34	1324.68	1593.9	1241.37	1518.12	1169.35	1433.51
80	585.57	473.71	540.65	402.25	475.83	356.64	433.46	324.25	398.08
85	256.69	130.8	230.18	109.74	193.02	92.33	167.82	78.91	150.87
90	55.48	59.75	55.52	60.39	55.57	59.97	54.36	58.08	52.62
95	73.39	72.76	73.6	82.3	74.16	81.85	72.86	71.41	70.4
100	100.1	112.28	99.22	98.73	99.08	97.99	97.61	108.49	94.93
105	139.42	137.18	136.65	135.05	135.03	133.73	133.68	132.17	131.63
110	193.38	190.08	188.98	186.62	186.95	185.87	186.89	186.29	186.36
115	271.47	267.96	267.01	265.33	266.88	267.34	269.89	270.73	271.76
120	398.07	394.72	394.38	393.66	396.38	398.44	401.44	403.29	405.12
125	548.37	588.86	544.1	586.32	544.16	587.7	547.79	590.44	549.65
130	782.17	902.95	774.64	892.68	767.76	882.87	764.04	874.68	762.42

Luminaire

Lamp

No. of lamps	1	Voltage (V)	220.06
Lamp flux (lm)	190032	Current (A)	6.0522
Total flux (lm)	190032	Power Factor	0.9938

Report

Filename	1.jdt
Operator	
Date	2021-09-01 오후 1:50:25

Luminous Intensity Data (Continued)

Maximum (cd) : 713412

Minimum (cd) : 52

G/C	90	100	110	120	130	140	150	160	170
0	710707.1	710274.5	710150.2	709888.3	710356.3	710275.6	710423.6	709957.6	709649.3
5	622002.3	620776.1	620769.6	620386.1	620623.6	620989.4	621433.8	621204.6	621466.8
10	388825	385845.3	386171	381625	382414.3	380286.5	380253.7	377003.1	378396.6
15	200966.4	199694.5	198221	193475	191853.1	187841.4	186635.3	182825.8	182906.4
20	110789	110656	109209.2	107117.4	105249.3	103312.4	104774.3	116483.7	105510.4
25	74504.34	81665.13	74990.04	79010.78	73453.1	78904.15	73328.27	73005.19	74017.83
30	45332.7	50140.47	47439.17	52150.29	50335.45	53758.87	50732.89	53558.04	47736.65
35	29159.93	29471.14	31780.53	34144.68	36566.21	37277.92	35452.11	32369.82	29847.04
40	16203.59	16470.4	18053.11	20138.37	22653.66	22502.33	20152.15	16416.52	14288.39
45	10212.77	10332.04	11191.47	12529.25	14155.77	13680.21	11737.38	10081.37	9476.91
50	7755.41	8451.96	8182.06	9802.1	9546.7	10380.04	8527.77	8525.1	7769.01
55	5912.24	6165.37	6041.14	6751.72	7054.19	6951	6490.81	6680.81	6529.12
60	5011.2	4759.33	4800.91	4960.35	4882.73	5271.46	5296.4	5310.83	5426.67
65	3564.86	3387.56	3428.71	3503.08	3611.74	3761.14	3882.18	3877.55	3992.76
70	2189.45	2162.8	2206.88	2248.79	2309.84	2343.87	2500.48	2554.26	2592.85
75	1132.83	1435.2	1157.12	1498.01	1224.03	1589.25	1318.88	1735.66	1427.64
80	307.76	640.54	320.73	424.41	348.46	463.26	393.91	529.56	463.25
85	74.28	73.1	77.82	162.89	89.59	187.24	106.1	223.33	125.08
90	56.42	54.18	56.61	54.94	57.23	55.23	57.11	55.03	56.69
95	69.16	65.7	68.83	66.03	69.06	65.89	68.28	64.84	66.82
100	105.58	92.76	103.6	91.79	102.11	90.75	100.42	88.96	98.79
105	129.32	128.45	126.21	125.39	123.48	122.84	121.23	121.17	120.09
110	183.95	182.54	178.63	176.36	172.72	171.24	168.51	168.5	167.4
115	269.4	267.64	262.48	258.39	252.49	248.72	244.21	242.89	240.87
120	403.17	400.63	394.35	389.3	382.24	377	371.03	367.69	364.92
125	588.91	545.41	581.21	535.14	571.03	524.42	562.71	516.73	558.03
130	870.08	757.52	865.72	752.2	865.48	746.91	867.96	745.95	871.62

Luminaire

Lamp

No. of lamps	1	Voltage (V)	220.06
Lamp flux (lm)	190032	Current (A)	6.0522
Total flux (lm)	190032	Power Factor	0.9938

Report

Filename	1.jdt
Operator	
Date	2021-09-01 오후 1:50:25

Luminous Intensity Data (Continued)

Maximum (cd) : 713412

Minimum (cd) : 52

G/C	180	190	200	210	220	230	240	250	260
0	713412.4	712546.1	711657.6	711414.8	711324.7	711395.4	711255.4	711354.9	710767.1
5	666960.9	665486.8	667220	666283.4	668461.7	667616.1	669280.1	668095.6	669533.4
10	458162.8	454725.1	459372.4	457079.2	462431.9	459411.8	465394.8	462334.3	466387.8
15	223291.4	220790.3	222765.9	222820.3	227774.2	229290.5	233406	234876.8	240176.1
20	120163.8	118270.9	117087.6	115406.4	114545.5	115779.8	118394.8	119722.1	122097.4
25	80240.08	84756.87	77314.96	81743.74	75188.25	79840.23	74408.55	81509.34	74841.01
30	53226.84	57086.4	52417.54	54943.19	51117.14	53481.1	47506.29	49519.45	44109.86
35	34321.35	34308.64	35750.43	37285.73	37535.14	35456.53	32609.78	29764.04	28061.88
40	16109.74	16511.01	18686.76	21144.91	22528.52	21038.87	18748.72	16546.67	15521.77
45	10093.64	10095.51	10514.55	11918.67	13101.53	12651.13	11255.7	10029.2	9512.53
50	8001.08	8434.88	8132.45	9235.53	8863.64	9712.07	8131.44	8142.88	7282.57
55	7148.38	7036.64	6622.34	6894.85	6624.97	6754.91	6234.58	6184.32	5844.63
60	5923.66	5718.82	5646.74	5530.27	5486.71	5310.03	5111.93	4864.23	4908.1
65	4665.98	4345.04	4250.9	4178.53	4109.64	3859.66	3759.93	3619.71	3655.87
70	2980.46	2942.43	2914.68	2816.42	2715.23	2593.77	2546.56	2422.21	2418.86
75	1728.95	1708.05	1688.36	1957.9	1536.13	1804.75	1435.05	1718.39	1368.04
80	783.02	1046.78	729.93	671.02	524.76	614.36	482.44	579.17	453.66
85	147.46	373.69	131.33	313.3	157.02	275.8	137.32	257.09	127.53
90	53.65	52.19	53.67	52.33	54.36	52.8	54.61	52.69	54.4
95	61.36	59.49	62.08	60.67	63.91	62.04	64.97	62.45	65.33
100	84.35	77.2	86.85	80.25	90.73	83.43	93.72	85.27	96.23
105	101.01	102.69	103.72	106.19	107.93	110.7	112.08	114.8	116.06
110	138.59	140.41	141.02	143.36	145.39	149.06	151.74	156.17	158.71
115	190.35	192.76	193.62	196.38	199.5	204.69	209.11	215.07	219.01
120	270.39	273.25	276.17	280.55	285.99	293.39	299.61	307.42	312.64
125	407.84	409.93	414.46	419.32	426.21	432.99	440.62	448.18	454.18
130	614.21	570.88	618.15	576.67	624	585.95	630.48	595.65	639.13

Luminaire

Lamp

No. of lamps	1	Voltage (V)	220.06
Lamp flux (lm)	190032	Current (A)	6.0522
Total flux (lm)	190032	Power Factor	0.9938

Report

Filename	1.jdt
Operator	
Date	2021-09-01 오후 1:50:25

Luminous Intensity Data (Continued)

Maximum (cd) : 713412

Minimum (cd) : 52

G/C	270	280	290	300	310	320	330	340	350
0	710707.1	710274.5	710150.2	709888.3	710356.3	710275.6	710423.6	709957.6	709649.3
5	667669.3	668977.8	667450.3	669663.4	669492.3	671829.1	670928.7	672137.3	670570.6
10	463055.3	467704.8	464291.8	468172.9	463106.5	466618.4	461320.5	464036.5	458812.7
15	239064	240103.1	235368.6	233613.9	228772.4	227538.5	222452	222188.3	218786.2
20	120938.7	118602.5	132705.3	112536.5	124769	107025.9	123097.8	109314.2	125512.5
25	81773.11	73191.81	70756.13	63976.64	68170.09	64330.79	68314.17	63965.57	70325.49
30	47399.19	42703.96	47015.09	47256.95	47974.99	47716.7	47735.93	47663.89	46966.57
35	26944.64	27198.49	28147.44	29949.58	31002.31	31459.26	29447.58	26760.93	24696.46
40	14989.98	15186.54	15906.38	17528.36	18553.99	18060.36	15821.37	13671.26	12518.77
45	10683.01	9421.58	9841.65	10752.85	11334.31	10663.68	9483.17	8845.71	9516.31
50	7285.38	7252.49	8040.56	7762.2	8758.44	7807.39	7917.43	7252.8	7108.69
55	6093.68	5784.12	6061.69	6039.42	6338.87	6201.29	6359.84	6096	6432.27
60	5091.92	4817.72	4801.45	4996.47	5093.37	5217.13	5235.42	5314.98	5394.02
65	3857.03	3607.98	3581.24	3681.12	3766.93	3985.75	4040.76	4069.1	4215.06
70	2421.4	2400.02	2406	2514.74	2575.41	2673.81	2793.02	2844.23	2892.02
75	1706.48	1373.11	1708.27	1432.03	1808.95	1541.22	1949.83	1682.73	1707.62
80	561.3	458.91	589.06	489.37	624.43	541.5	687.14	745.37	1056.15
85	244.83	129.72	262.53	142.51	288.63	167.4	326.03	141.39	388.11
90	53	55.23	54.17	56.71	55.32	57.59	55.64	56.74	55.04
95	63	66.61	64.63	68.19	65.75	68.76	65.4	67.02	63.64
100	87.18	98.68	89.23	100.05	89.93	99.77	88.78	97.37	86.06
105	118.52	119.1	120.78	120.2	120.63	119.37	119.21	117.36	117.25
110	161.97	162.85	164.45	163.27	163.11	161.38	161.27	159.87	160.46
115	223.47	224.3	226.23	224.13	222.8	220.36	219.07	217.13	217
120	317.35	318.34	319.83	317.19	314.99	310.76	307.52	303.3	301.17
125	458.42	459.99	460.2	458.81	455.97	452.31	447.77	443.3	439.27
130	604.79	644.12	607.17	647.41	608.33	648.82	604.17	646.21	599.36

Luminaire

Lamp

No. of lamps	1	Voltage (V)	220.06
Lamp flux (lm)	190032	Current (A)	6.0522
Total flux (lm)	190032	Power Factor	0.9938

Report

Filename	1.jdt
Operator	
Date	2021-09-01 오후 1:50:25

Luminous Intensity Data (Continued)

Maximum (cd) : 713412

Minimum (cd) : 52

G/C	360
0	713412.4
5	632986.9
10	381556.7
15	177033
20	108268.4
25	64591.11
30	40319.96
35	19683.69
40	11061.41
45	8886.35
50	6946.79
55	6211.27
60	5410.5
65	4053.43
70	2581.01
75	1787.4
80	585.57
85	256.69
90	55.48
95	73.39
100	100.1
105	139.42
110	193.38
115	271.47
120	398.07
125	548.37
130	782.17

Luminaire

Lamp

No. of lamps	1	Voltage (V)	220.06
Lamp flux (lm)	190032	Current (A)	6.0522
Total flux (lm)	190032	Power Factor	0.9938

Report

Filename	1.jdt
Operator	
Date	2021-09-01 오후 1:50:25

Luminous Flux Table

Total Lamp Lumens:	190032
Luminaire Efficiency (lm/W):	191217.70
CIE Classification:	Direct

Elevation	Lumens	Cumulative	Lamp %	Luminaire %
0	4251.48	4251.48	2.24	2.24
5	30894.45	35145.93	18.49	18.49
10	40271.52	75417.45	39.69	39.69
15	29570.28	104987.70	55.25	55.25
20	21193.30	126181.00	66.40	66.40
25	16801.93	142983.00	75.24	75.24
30	13305.57	156288.50	82.24	82.24
35	9609.07	165897.60	87.30	87.30
40	5985.72	171883.30	90.45	90.45
45	4111.88	175995.20	92.61	92.61
50	3422.46	179417.70	94.41	94.41
55	2850.27	182268.00	95.91	95.91
60	2438.38	184706.30	97.20	97.20
65	1893.51	186599.80	98.19	98.19
70	1293.70	187893.50	98.87	98.87
75	818.04	188711.60	99.31	99.31
80	292.71	189004.30	99.46	99.46
85	99.22	189103.50	99.51	99.51
90	30.38	189133.90	99.53	99.53
95	36.90	189170.80	99.55	99.55
100	50.96	189221.70	99.57	99.57
105	64.42	189286.10	99.61	99.61
110	86.48	189372.60	99.65	99.65
115	117.58	189490.20	99.71	99.71
120	164.11	189654.30	99.80	99.80
125	224.51	189878.80	99.92	99.92
130	153.30	190032.10	100.00	100.00

Luminaire

Lamp

No. of lamps	1	Voltage (V)	220.06
Lamp flux (lm)	190032	Current (A)	6.0522
Total flux (lm)	190032	Power Factor	0.9938

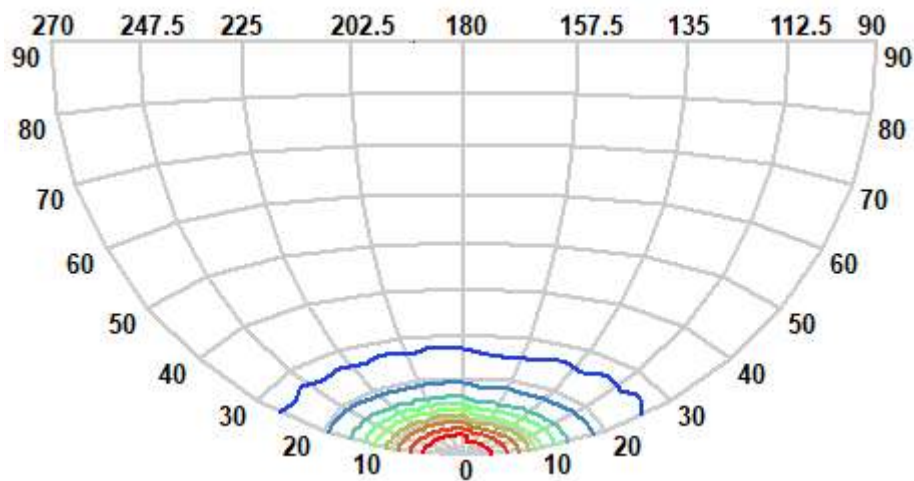
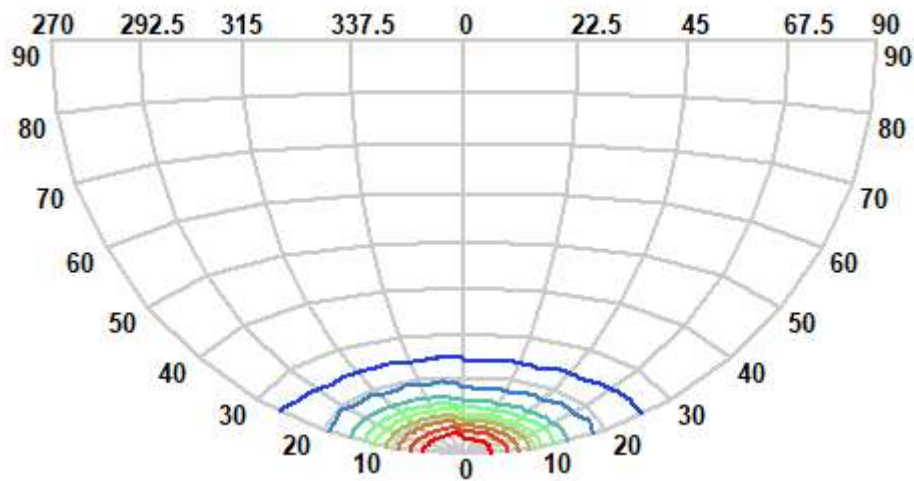
Report

Filename 1.jdt

Operator

Date 2021-09-01 오후 1:50:25

IsoCandela (Type C)



52	~	71388	356732	~	428068
71388	~	142724	428068	~	499404
142724	~	214060	499404	~	570740
214060	~	285396	570740	~	642076
285396	~	356732	642076	~	713412

Luminaire

Lamp

No. of lamps	1	Voltage (V)	220.06
Lamp flux (lm)	190032	Current (A)	6.0522
Total flux (lm)	190032	Power Factor	0.9938

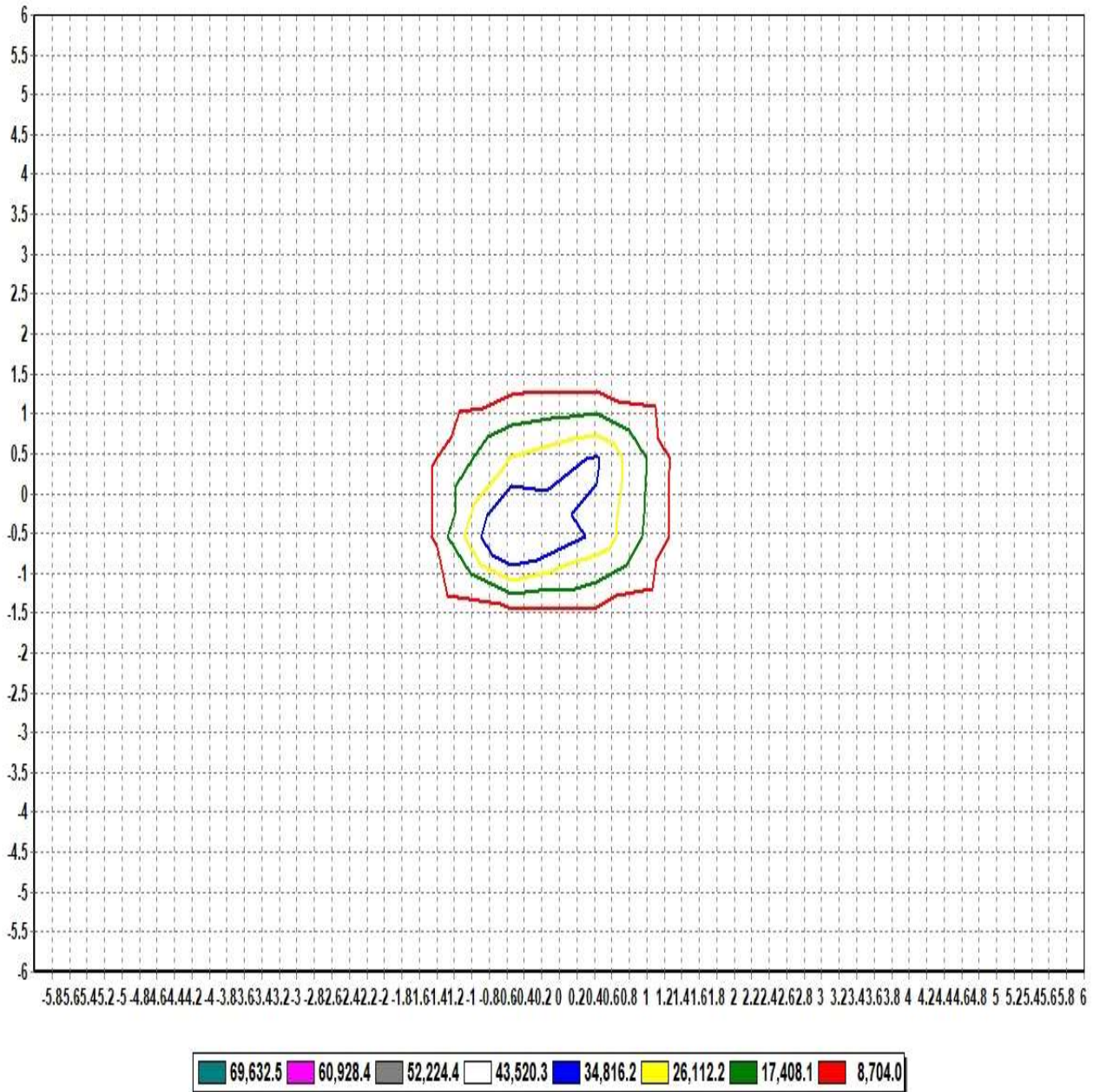
Report

Filename 1.jdt

Operator

Date 2021-09-01 오후 1:50:25

IsoLux Diagram (Ground)



Pole Height (m): 2.7

Area Width (m): 12

Total Optical Solution Provider

Luminaire

Lamp

No. of lamps	1	Voltage (V)	220.06
Lamp flux (lm)	190032	Current (A)	6.0522
Total flux (lm)	190032	Power Factor	0.9938

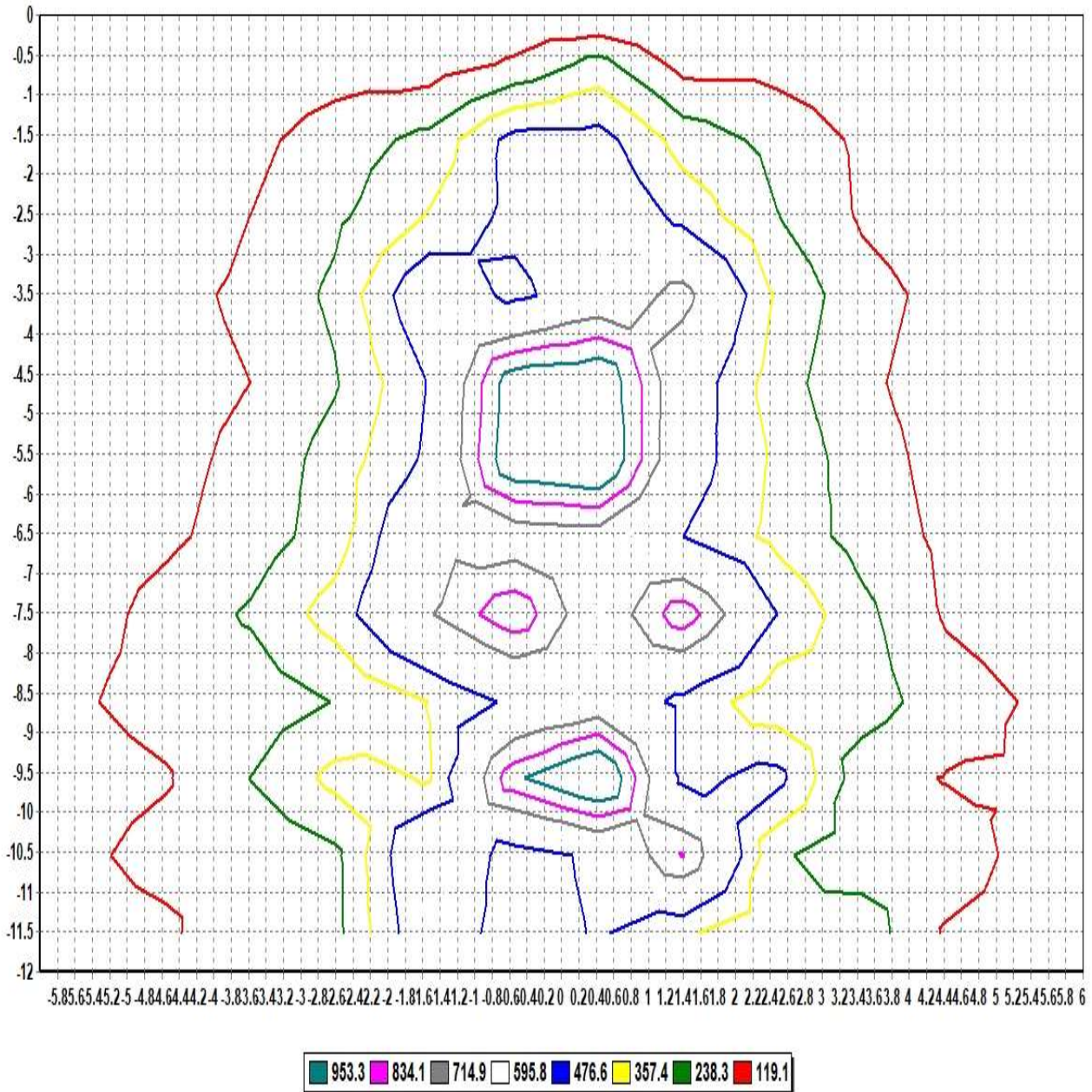
Report

Filename 1.jdt

Operator

Date 2021-09-01 오후 1:50:25

IsoLux Diagram (Wall)



Pole Height (m):	2.7	Wall Distance (m):	2.7
Aiming Plane:	0	Wall Height (m):	12
Total Optical Solution Provider			

Luminaire

Lamp

No. of lamps	1	Voltage (V)	220.06
Lamp flux (lm)	190032	Current (A)	6.0522
Total flux (lm)	190032	Power Factor	0.9938

Report

Filename 1.jdt

Operator

Date 2021-09-01 오후 1:50:25

Illuminance Levels (Ground)

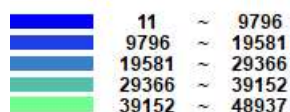
6.00	11.31	16.11	13.91	19.37	35.52	41.04	45.39	40.80	35.64	19.73	14.23	16.35	11.83
5.00	16.13	15.62	34.91	48.58	47.45	77.87	82.67	77.47	47.64	48.67	35.47	16.41	16.37
4.00	15.32	35.23	40.54	92.56	99.71	165.01	177.62	166.35	98.38	85.40	42.10	35.59	15.61
3.00	20.98	53.43	93.64	125.28	212.95	319.32	358.59	337.18	210.23	117.58	84.99	50.53	21.24
2.00	39.56	53.65	106.42	224.31	869.44	1281.51	2874.55	1227.70	635.47	189.58	98.89	53.02	37.85
1.00	45.91	85.35	170.18	331.13	1428.79	6008.64	22073.69	5206.45	901.54	266.68	149.71	82.37	44.78
0.00	54.31	99.31	188.18	362.73	3376.94	24504.38	97861.77	19522.93	2420.64	316.93	163.41	87.56	49.30
-1.00	49.82	92.98	175.78	315.57	1348.35	6199.13	26178.90	5369.42	1145.97	299.23	154.65	83.87	46.30
-2.00	42.62	58.99	110.72	218.22	874.04	1334.99	2928.45	1120.74	730.63	203.17	103.31	55.17	39.81
-3.00	24.07	56.91	92.93	130.08	214.56	316.26	354.64	304.19	199.18	119.11	87.06	52.89	22.93
-4.00	17.86	39.47	46.97	92.16	104.94	158.84	169.39	153.54	98.11	86.22	42.32	36.60	17.05
-5.00	18.43	18.76	39.19	51.79	50.10	76.96	84.86	79.21	49.37	48.67	36.32	17.17	16.98
-6.00	13.37	18.40	15.93	21.83	37.95	42.15	46.46	41.90	36.08	20.90	15.20	16.95	12.12
-6.00	-5.00	-4.00	-3.00	-2.00	-1.00	0.00	1.00	2.00	3.00	4.00	5.00	6.00	

Illum. (Max.) : 97862

Illum. (Min.) : 11.3

Illum. (Avg.) : 1483

All illuminance level values are in lux.



Luminaire

Lamp

No. of lamps	1	Voltage (V)	220.06
Lamp flux (lm)	190032	Current (A)	6.0522
Total flux (lm)	190032	Power Factor	0.9938

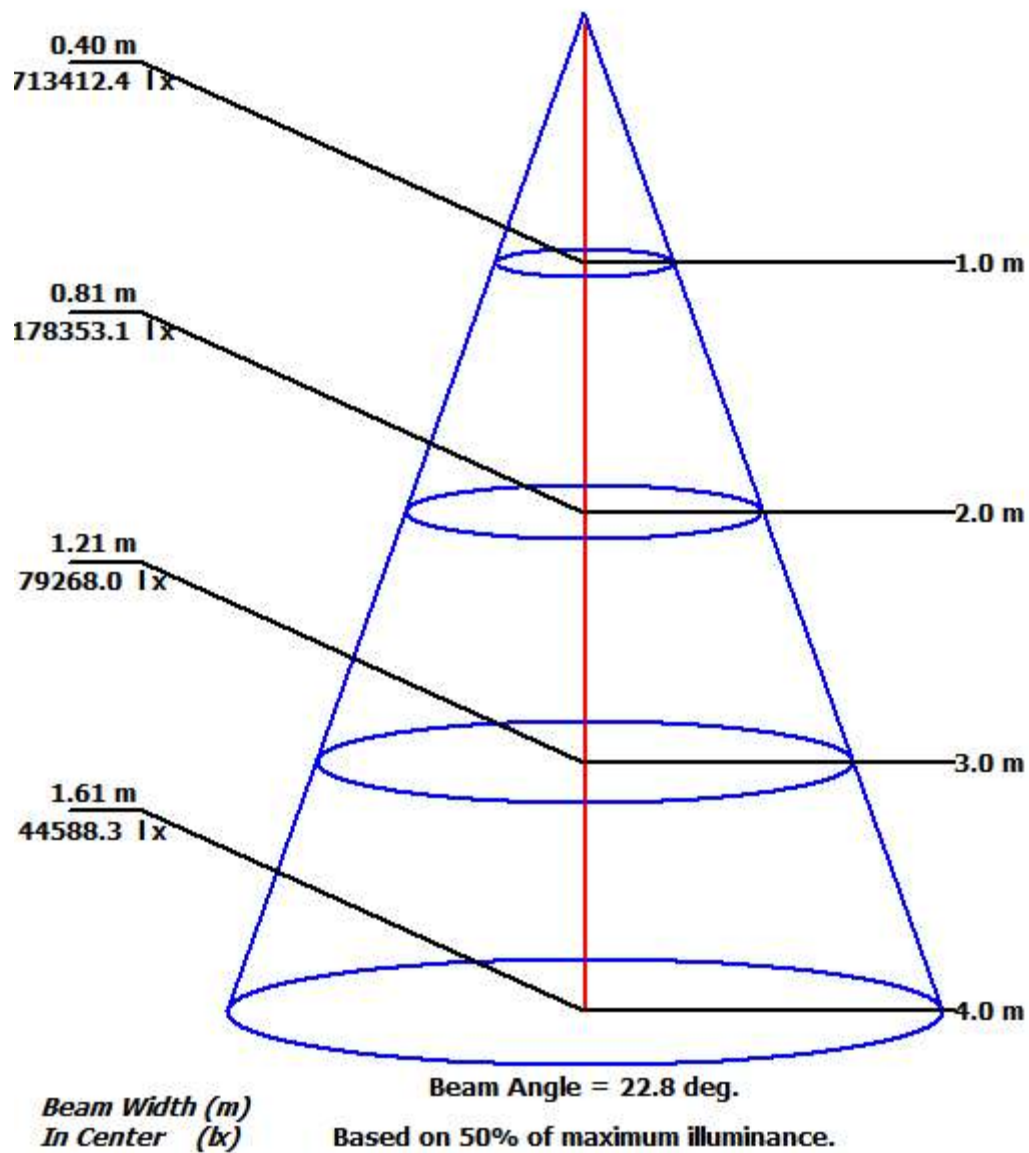
Report

Filename 1.jdt

Operator

Date 2021-09-01 오후 1:50:25

Illuminance Cone Diagram



Luminaire

Lamp

No. of lamps	1	Voltage (V)	220.06
Lamp flux (lm)	190032	Current (A)	6.0522
Total flux (lm)	190032	Power Factor	0.9938

Report

Filename 1.jdt

Operator

Date 2021-09-01 오후 1:50:25

Coefficient of Utilization

	Refl. Ceiling (%)	80%	80%	80%	70%	70%	70%	50%	50%	50%	30%	30%	30%	10%	10%	10%	0%
	Refl. Wall (%)	50%	30%	10%	50%	30%	10%	50%	30%	10%	50%	30%	10%	50%	30%	10%	0%
Eff. Floor Cavity Refl.		20%	20%	20%	20%	20%	20%	20%	20%	20%	20%	20%	20%	20%	20%	20%	20%
Room CR 0		1.18	1.18	1.18	1.16	1.16	1.16	1.10	1.10	1.10	1.06	1.06	1.06	1.01	1.01	1.01	0.99
Room CR 1		1.11	1.09	1.07	1.09	1.07	1.05	1.05	1.03	1.02	1.01	1.00	0.98	0.97	0.96	0.96	0.94
Room CR 2		1.04	1.01	0.98	1.02	0.99	0.96	0.99	0.97	0.94	0.96	0.94	0.92	0.93	0.92	0.90	0.89
Room CR 3		0.98	0.94	0.91	0.97	0.93	0.90	0.94	0.91	0.88	0.92	0.89	0.87	0.90	0.87	0.85	0.84
Room CR 4		0.93	0.89	0.85	0.92	0.88	0.84	0.90	0.86	0.83	0.88	0.85	0.82	0.86	0.84	0.81	0.80
Room CR 5		0.89	0.84	0.80	0.88	0.83	0.80	0.86	0.82	0.79	0.85	0.81	0.78	0.83	0.80	0.78	0.76
Room CR 6		0.85	0.80	0.76	0.84	0.80	0.76	0.83	0.79	0.76	0.82	0.78	0.75	0.80	0.77	0.75	0.73
Room CR 7		0.82	0.77	0.73	0.81	0.76	0.73	0.80	0.76	0.72	0.79	0.75	0.72	0.78	0.74	0.72	0.71
Room CR 8		0.79	0.74	0.70	0.78	0.73	0.70	0.77	0.73	0.70	0.76	0.72	0.69	0.75	0.72	0.69	0.68
Room CR 9		0.76	0.71	0.68	0.75	0.71	0.68	0.74	0.70	0.67	0.74	0.70	0.67	0.73	0.69	0.67	0.66
Room CR 10		0.73	0.68	0.65	0.73	0.68	0.65	0.72	0.68	0.65	0.71	0.68	0.65	0.71	0.67	0.65	0.64