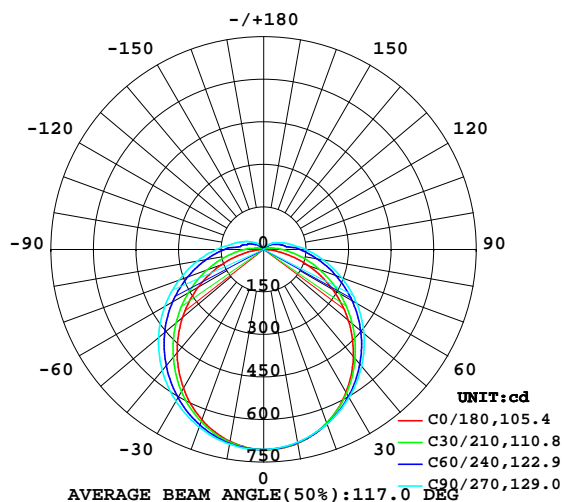


LUMINAIRE PHOTOMETRIC TEST REPORT

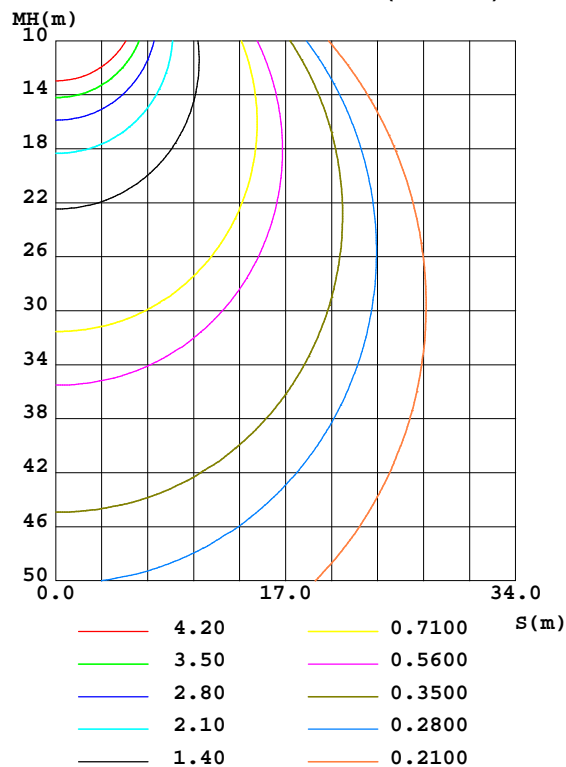
Test:U:219.9V I:0.0810A P:17.38W PF:0.9759 Lamp Flux:2431.43x1 lm		
NAME: 레이스웨이센서 / Z-WFL-18eS	TYPE:LED	WEIGHT:
SPEC.:18W	DIM.:	SERIAL No.:
MFR.: ICEPIPE	SUR.:	Shielding Angle:

DATA OF LAMP		PHOTOMETRIC DATA Eff: 139.87 lm/W			
MODEL	GRW-S18	Imax(cd)	706.7	S/MH(C0/180)	1.20
NOMINAL POWER(W)	18	LOR(%)	100.0	S/MH(C90/270)	1.31
RATED VOLTAGE(V)	220	TOTAL FLUX(lm)	2431.4	η UP,DN(C0-180)	4.0,45.0
NOMINAL FLUX(lm)	2431.43	CIE CLASS	DIRECT	η UP,DN(C180-360)	4.4,46.6
LAMPS INSIDE	1	η up(%)	8.4	CIBSE SHR NOM	1.25
TEST VOLTAGE(V)	220	η down(%)	91.6	CIBSE SHR MAX	1.35

LUMINOUS INTENSITY DISTRIBUTION DIAGRAM



C0 PLANE ISOLUX DIAGRAM (UNIT:lx)



C Range: 0 - 360DEG
 C Interval: 15.0DEG
 Test Speed: HIGH
 Temperature: 25.3DEG
 Operators: ARK
 Test Date: 28 September 2022

γ Range: 0 - 180DEG
 γ Interval: 1.0DEG
 Test System: EVERFINE GO-2000A_V1 SYSTEM V2.0.351
 Humidity: 65.0%
 Test Distance: 8.100m [K=1.0000]
 Remarks: GRW-S18 / Z-WFL-18eS

ZONAL FLUX DIAGRAM

ZONAL FLUX DIAGRAM:

γ	C0	C45	C90	C135	C180	C225	C270	C315	γ	Φ zone	Φ total	%lum,lamp
10	694.0	692.3	690.2	687.9	686.8	692.1	697.0	696.9	0- 10	66.72	66.72	2.74,2.74
20	650.9	652.5	654.8	643.9	638.2	651.9	666.5	661.1	10- 20	190.5	257.2	10.6,10.6
30	581.8	592.1	602.7	580.4	565.7	591.1	618.3	603.1	20- 30	287.8	545.1	22.4,22.4
40	492.9	515.4	537.5	502.0	475.4	514.9	556.8	528.2	30- 40	347.4	892.5	36.7,36.7
50	390.1	428.2	461.7	415.0	374.1	429.6	484.3	442.7	40- 50	364.8	1257	51.7,51.7
60	280.3	336.1	378.7	324.0	267.4	339.9	403.3	351.5	50- 60	341.8	1599	65.8,65.8
70	167.5	245.8	292.9	235.9	158.5	251.2	318.8	260.9	60- 70	285.6	1885	77.5,77.5
80	62.69	163.3	212.6	156.0	57.79	170.4	237.2	177.3	70- 80	209.2	2094	86.1,86.1
90	4.027	102.2	148.5	97.33	3.090	107.1	166.0	111.5	80- 90	133.4	2227	91.6,91.6
100	4.527	55.31	100.5	50.03	3.640	55.65	113.3	60.32	90-100	78.35	2306	94.8,94.8
110	5.163	37.53	70.55	33.81	4.239	37.02	80.32	42.32	100-110	48.82	2355	96.8,96.8
120	5.753	26.01	48.05	20.23	4.862	23.20	54.34	28.62	110-120	31.80	2386	98.1,98.1
130	6.335	17.74	32.18	13.58	5.480	14.77	36.15	19.48	120-130	19.71	2406	99,99
140	6.943	12.19	20.68	9.948	6.196	10.05	22.73	13.14	130-140	11.74	2418	99.4,99.4
150	7.483	8.532	12.77	7.993	6.912	7.753	14.13	8.716	140-150	6.756	2425	99.7,99.7
160	7.966	8.111	8.047	8.009	7.576	7.334	8.078	7.450	150-160	3.865	2428	99.9,99.9
170	8.361	8.320	8.292	8.250	8.166	7.901	7.920	7.989	160-170	2.247	2431	100,100
180	8.473	8.296	8.320	8.310	8.487	8.301	8.310	8.310	170-180	0.7850	2431	100,100
DEG	LUMINOUS INTENSITY:cd									UNIT:lm		

Conical surface Flux(90deg): 1075.4 lm

%lum = 44.2%

%lamp = 44.2%

Conical surface Flux(120deg): 1599.1 lm

%lum = 65.8%

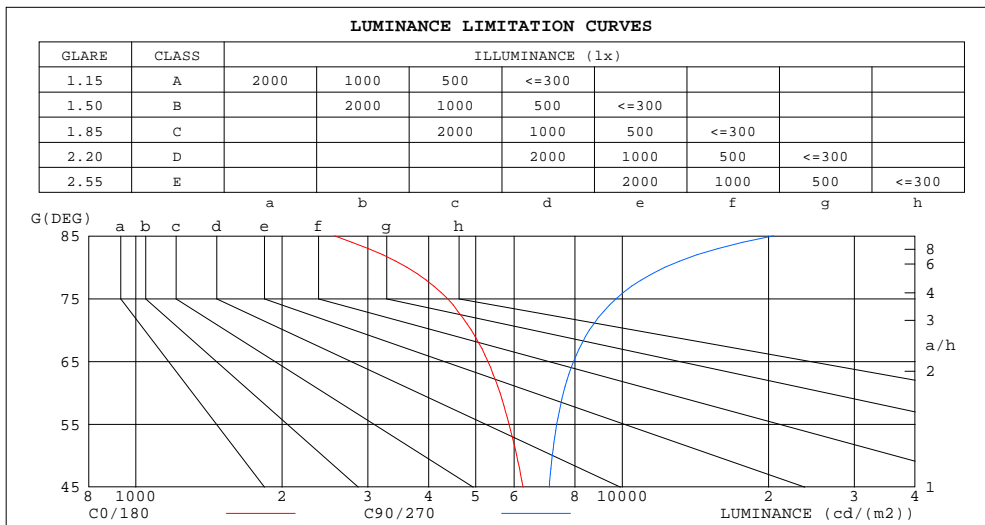
%lamp = 65.8%

C Range: 0 - 360DEG
C Interval: 15.0DEG
Test Speed: HIGH
Temperature:25.3DEG
Operators:ARK
Test Date:28 September 2022

γ Range: 0 - 180DEG
 γ Interval: 1.0DEG
Test System:EVERFINE GO-2000A_V1 SYSTEM V2.0.351
Humidity:65.0%
Test Distance:8.100m [K=1.0000]
Remarks: GRW-S18 / Z-WFL-18eS

LUMINANCE LIMITATION CURVES

Test:U:219.9V I:0.0810A P:17.38W PF:0.9759 Lamp Flux:2431.43x1 lm		
NAME: 레이스웨이센서 / Z-WFL-18eS	TYPE:LED	WEIGHT:
SPEC.:18W	DIM.:	SERIAL No.:
MFR.: ICEPIPE	SUR.:	Shielding Angle:



LUMINANCE cd/(m2)		
G(DEG)	C0/180	C90/270
85	2562	20472
80	3610	12240
75	4375	9718
70	4897	8563
65	5298	7945
60	5606	7574
55	5855	7337
50	6069	7183
45	6261	7080

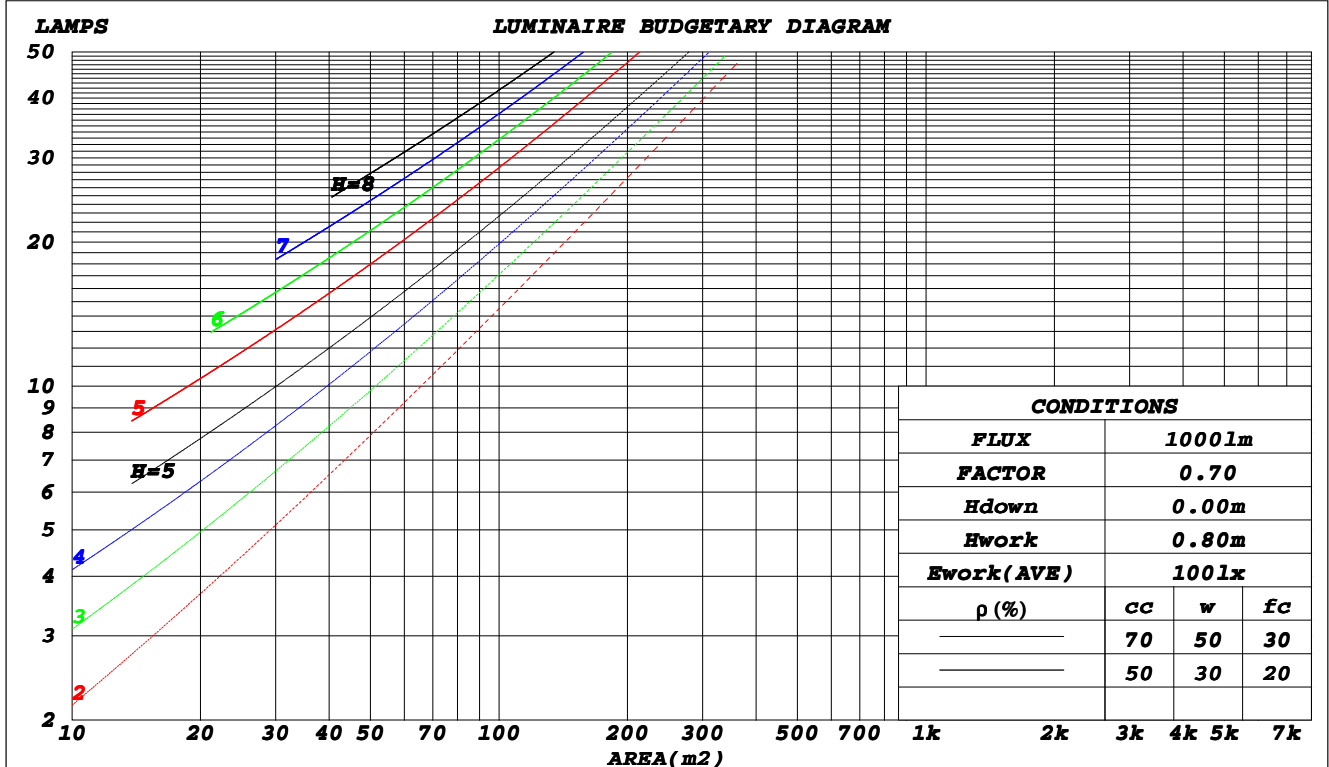
C Range: 0 - 360DEG
C Interval: 15.0DEG
Test Speed: HIGH
Temperature: 25.3DEG
Operators: ARK
Test Date: 28 September 2022

γ Range: 0 - 180DEG
γ Interval: 1.0DEG
Test System: EVERFINE GO-2000A_V1 SYSTEM V2.0.351
Humidity: 65.0%
Test Distance: 8.100m [K=1.0000]
Remarks: GRW-S18 / Z-WFL-18eS

CU AND LUMINAIRE BUDGETARY ESTIMATE DIAGRAM

Test:U:219.9V I:0.0810A P:17.38W PF:0.9759 Lamp Flux:2431.43x1 lm		
NAME: 레이스웨이센서 / Z-WFL-18eS	TYPE:LED	WEIGHT:
SPEC.:18W	DIM.:	SERIAL No.:
MFR.: ICEPIPE	SUR.:	Shielding Angle:

ρ_{cc}	80%			70%			50%			30%			10%			0
ρ_w	50%	30%	10%	50%	30%	10%	50%	30%	10%	50%	30%	10%	50%	30%	10%	0
ρ_{fc}	20%			20%			20%			20%			20%			0
RCR	RCR:Room Cavity Ratio						Coefficients of Utilization(CU)									
0.0	1.17	1.17	1.17	1.13	1.13	1.13	1.06	1.06	1.06	1.00	1.00	1.00	.94	.94	.94	.92
1.0	.99	.94	.90	.96	.92	.88	.90	.87	.83	.85	.82	.79	.80	.78	.75	.73
2.0	.86	.78	.72	.83	.76	.70	.78	.72	.68	.74	.69	.65	.69	.65	.62	.59
3.0	.75	.66	.59	.73	.65	.58	.68	.62	.56	.64	.59	.54	.61	.56	.52	.49
4.0	.66	.57	.50	.64	.56	.49	.60	.53	.47	.57	.51	.46	.54	.49	.44	.42
5.0	.59	.49	.43	.57	.48	.42	.54	.46	.41	.51	.45	.39	.48	.43	.38	.36
6.0	.53	.44	.37	.51	.43	.36	.49	.41	.35	.46	.40	.34	.44	.38	.34	.31
7.0	.48	.39	.33	.47	.38	.32	.44	.37	.31	.42	.35	.30	.40	.34	.30	.28
8.0	.44	.35	.29	.42	.34	.29	.40	.33	.28	.39	.32	.27	.37	.31	.27	.24
9.0	.40	.32	.26	.39	.31	.26	.37	.30	.25	.36	.29	.24	.34	.28	.24	.22
10.0	.37	.29	.23	.36	.28	.23	.34	.27	.23	.33	.27	.22	.31	.26	.22	.20



C Range: 0 - 360DEG
 C Interval: 15.0DEG
 Test Speed: HIGH
 Temperature:25.3DEG
 Operators:ARK
 Test Date:28 September 2022

γ Range: 0 - 180DEG
 γ Interval: 1.0DEG
 Test System:EVERFINE GO-2000A_V1 SYSTEM V2.0.351
 Humidity:65.0%
 Test Distance:8.100m [K=1.0000]
 Remarks: GRW-S18 / Z-WFL-18eS

WEC AND CCEC

Test:U:219.9V I:0.0810A P:17.38W PF:0.9759 Lamp Flux:2431.43x1 lm		
NAME: 레이스웨이센서 / Z-WFL-18eS	TYPE:LED	WEIGHT:
SPEC.:18W	DIM.:	SERIAL No.:
MFR.: ICEPIPE	SUR.:	Shielding Angle:

ρ_{cc}	80%			70%			50%			30%			10%			0	
ρ_w	50%	30%	10%	50%	30%	10%	50%	30%	10%	50%	30%	10%	50%	30%	10%	0	
ρ_{fc}	20%			20%			20%			20%			20%			0	
RCR	RCR:Room Cavity Ratio						Wall Exitance Coefficients(WEC)										
0.0																	
1.0	.357	.203	.064	.347	.198	.063	.329	.189	.060	.312	.180	.058	.296	.172	.055		
2.0	.317	.174	.053	.309	.170	.052	.292	.163	.050	.277	.156	.049	.263	.149	.047		
3.0	.286	.152	.046	.278	.149	.045	.264	.143	.043	.250	.137	.042	.237	.131	.041		
4.0	.260	.135	.040	.253	.132	.039	.240	.127	.038	.227	.122	.037	.216	.117	.036		
5.0	.238	.121	.035	.231	.119	.035	.220	.114	.034	.208	.110	.033	.198	.106	.032		
6.0	.219	.110	.031	.213	.108	.031	.202	.104	.030	.192	.100	.029	.183	.096	.029		
7.0	.202	.100	.028	.197	.098	.028	.188	.095	.027	.179	.092	.027	.170	.088	.026		
8.0	.188	.092	.026	.184	.090	.026	.175	.087	.025	.167	.084	.024	.159	.082	.024		
9.0	.176	.085	.024	.172	.084	.023	.164	.081	.023	.156	.078	.022	.149	.076	.022		
10.0	.165	.079	.022	.161	.078	.022	.154	.075	.021	.147	.073	.021	.140	.070	.020		

ρ_{cc}	80%			70%			50%			30%			10%			0
ρ_w	50%	30%	10%	50%	30%	10%	50%	30%	10%	50%	30%	10%	50%	30%	10%	0
ρ_{fc}	20%			20%			20%			20%			20%			0
RCR	RCR:Room Cavity Ratio						Ceiling Cavity Exitance Coefficients(CCEC)									
0.0	.254	.254	.254	.217	.217	.217	.148	.148	.148	.085	.085	.085	.027	.027	.027	
1.0	.248	.220	.195	.212	.189	.168	.145	.130	.116	.084	.075	.068	.027	.024	.022	
2.0	.241	.197	.160	.206	.169	.138	.141	.117	.096	.081	.068	.056	.026	.022	.018	
3.0	.233	.180	.137	.200	.155	.119	.137	.108	.083	.079	.063	.049	.025	.020	.016	
4.0	.225	.167	.122	.193	.144	.106	.133	.100	.075	.077	.059	.044	.025	.019	.015	
5.0	.217	.157	.112	.187	.136	.097	.129	.095	.069	.074	.056	.041	.024	.018	.013	
6.0	.210	.148	.104	.180	.129	.091	.125	.090	.064	.072	.053	.038	.023	.017	.013	
7.0	.203	.142	.099	.175	.123	.086	.121	.086	.061	.070	.051	.036	.023	.017	.012	
8.0	.196	.136	.095	.169	.118	.083	.117	.083	.059	.068	.049	.035	.022	.016	.012	
9.0	.190	.131	.091	.164	.114	.080	.113	.080	.057	.066	.047	.034	.021	.016	.011	
10.0	.184	.127	.089	.159	.110	.077	.110	.078	.055	.064	.046	.033	.021	.015	.011	

C Range: 0 - 360DEG
C Interval: 15.0DEG
Test Speed: HIGH
Temperature:25.3DEG
Operators:ARK
Test Date:28 September 2022

γ Range: 0 - 180DEG
 γ Interval: 1.0DEG
Test System:EVERFINE GO-2000A_V1 SYSTEM V2.0.351
Humidity:65.0%
Test Distance:8.100m [K=1.0000]
Remarks: GRW-S18 / Z-WFL-18eS

UGR(Unified Glare Rating) Table

Test:U:219.9V I:0.0810A P:17.38W PF:0.9759 Lamp Flux:2431.43x1 lm										
NAME: 레이스웨이센서 / Z-WFL-18eS					TYPE:LED			WEIGHT:		
SPEC.:18W					DIM.:			SERIAL No.:		
MFR.: ICEPIPE					SUR.:			Shielding Angle:		
ceiling/cavity	0.7	0.7	0.5	0.5	0.3	0.7	0.7	0.5	0.5	0.3
walls	0.5	0.3	0.5	0.3	0.3	0.5	0.3	0.5	0.3	0.3
working plane	0.2	0.2	0.2	0.2	0.2	0.2	0.2	0.2	0.2	0.2
Room dimensions	Viewed crosswise					Viewed endwise				
x = 2H y = 2H	18.2	19.6	18.6	20.0	20.4	19.5	20.9	19.8	21.3	21.6
3H	19.6	20.9	20.0	21.3	21.7	21.6	23.0	22.1	23.4	23.8
4H	20.1	21.4	20.6	21.8	22.2	22.8	24.1	23.2	24.5	24.9
6H	20.5	21.7	20.9	22.1	22.6	24.0	25.2	24.4	25.6	26.1
8H	20.6	21.7	21.0	22.2	22.7	24.6	25.8	25.1	26.2	26.7
12H	20.6	21.7	21.1	22.2	22.7	25.4	26.5	25.9	27.0	27.4
4H 2H	19.0	20.3	19.5	20.7	21.2	20.0	21.3	20.4	21.7	22.1
3H	20.7	21.8	21.2	22.3	22.8	22.4	23.6	22.9	24.0	24.5
4H	21.4	22.4	21.9	22.9	23.4	23.8	24.8	24.3	25.3	25.8
6H	21.9	22.8	22.4	23.3	23.9	25.2	26.1	25.7	26.6	27.2
8H	22.1	22.9	22.6	23.4	24.0	26.0	26.8	26.5	27.3	27.9
12H	22.2	23.0	22.7	23.5	24.1	26.8	27.6	27.4	28.2	28.8
8H 4H	22.1	23.0	22.6	23.5	24.0	24.1	24.9	24.6	25.5	26.0
6H	22.9	23.6	23.5	24.2	24.8	25.8	26.5	26.3	27.0	27.7
8H	23.2	23.9	23.8	24.5	25.1	26.8	27.4	27.3	28.0	28.6
12H	23.5	24.0	24.1	24.6	25.3	27.9	28.5	28.5	29.1	29.7
12H 4H	22.3	23.1	22.8	23.6	24.2	24.1	24.9	24.6	25.4	26.0
6H	23.3	23.9	23.9	24.5	25.1	25.9	26.5	26.5	27.1	27.7
8H	23.7	24.3	24.4	24.9	25.6	27.0	27.5	27.6	28.1	28.8
Variations with the observer position at spacings:										
S = 1.0H	+ 0.1 / - 0.2					+ 0.1 / - 0.1				
1.5H	+ 0.2 / - 0.3					+ 0.2 / - 0.3				
2.0H	+ 0.1 / - 0.3					+ 0.2 / - 0.4				

CIE Pub.117 Corrected 2431 lm Total Lamp Luminous Flux.(8log(F/F0) = 3.1)

C Range: 0 - 360DEG
C Interval: 15.0DEG
Test Speed: HIGH
Temperature:25.3DEG
Operators:ARK
Test Date:28 September 2022

γ Range: 0 - 180DEG
γ Interval: 1.0DEG
Test System:EVERFINE GO-2000A_V1 SYSTEM V2.0.351
Humidity:65.0%
Test Distance:8.100m [K=1.0000]
Remarks: GRW-S18 / Z-WFL-18eS

UTILIZATION FACTORS TABLE

Test:U:219.9V I:0.0810A P:17.38W PF:0.9759 Lamp Flux:2431.43x1 lm		
NAME: 레이스웨이센서 / Z-WFL-18eS	TYPE:LED	WEIGHT:
SPEC.:18W	DIM.:	SERIAL No.:
MFR.: ICEPIPE	SUR.:	Shielding Angle:

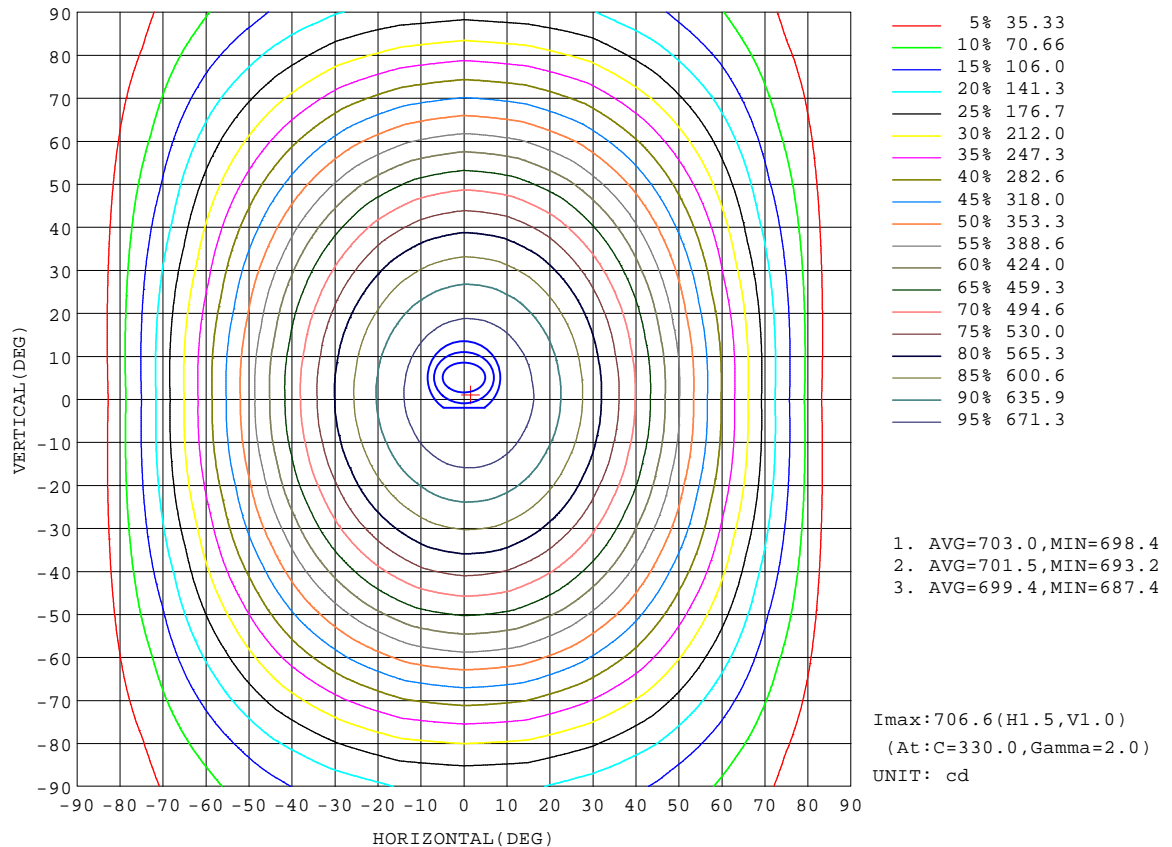
REFLECTANCE										
Ceiling	0.8	0.8	0.8	0.7	0.7	0.7	0.5	0.5	0.5	0
Walls	0.7	0.5	0.3	0.7	0.5	0.3	0.7	0.5	0.3	0
Working plane	0.2	0.2	0.2	0.2	0.2	0.2	0.2	0.2	0.2	0
ROOM INDEX	UTILIZATION FACTORS(PERCENT) $k(RI) \times RCR = 5$									
$k = 0.60$	53	41	34	52	40	33	50	40	33	27
0.80	62	50	42	61	49	42	59	48	41	34
1.00	70	58	50	69	57	50	66	58	49	41
1.25	77	65	58	75	65	57	72	63	56	47
1.50	82	71	63	80	70	62	76	67	61	52
2.00	89	79	72	87	78	71	82	75	69	59
2.50	93	84	77	91	82	76	86	79	73	63
3.00	97	89	82	94	87	81	89	83	78	67
4.00	101	94	89	98	92	87	93	88	83	72
5.00	104	98	93	101	95	91	95	91	87	75
ROOM INDEX	UF(total)									Direct
According to DIN EN 13032-2 2004			Suspended					SHRNOM = 1.25		

C Range: 0 - 360DEG
C Interval: 15.0DEG
Test Speed: HIGH
Temperature:25.3DEG
Operators:ARK
Test Date:28 September 2022

γ Range: 0 - 180DEG
 γ Interval: 1.0DEG
Test System:EVERFINE GO-2000A_V1 SYSTEM V2.0.351
Humidity:65.0%
Test Distance:8.100m [K=1.0000]
Remarks: GRW-S18 / Z-WFL-18eS

ISOCANDELA DIAGRAM

Test:U:219.9V I:0.0810A P:17.38W PF:0.9759 Lamp Flux:2431.43x1 lm		
NAME: 레이스웨이센서 / Z-WFL-18eS	TYPE:LED	WEIGHT:
SPEC.:18W	DIM.:	SERIAL No.:
MFR.: ICEPIPE	SUR.:	Shielding Angle:

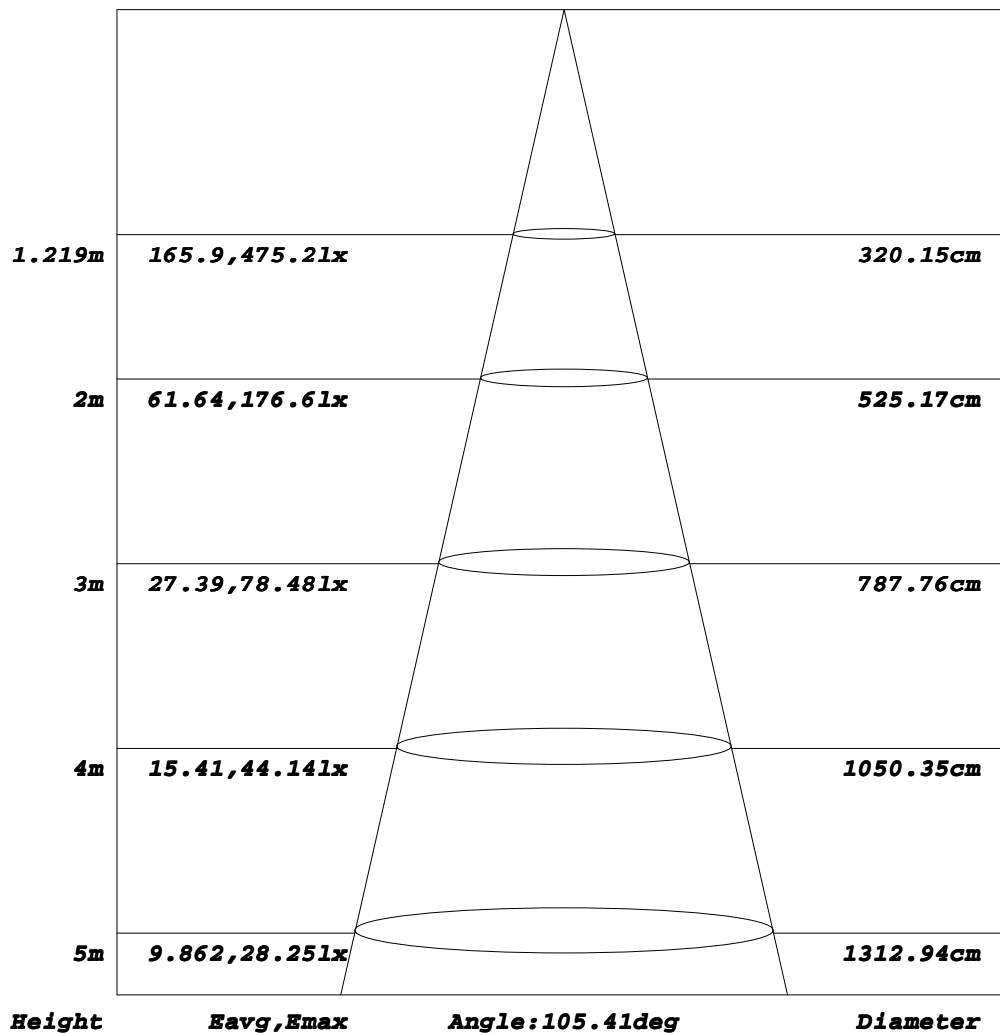


C Range: 0 - 360DEG
C Interval: 15.0DEG
Test Speed: HIGH
Temperature: 25.3DEG
Operators: ARK
Test Date: 28 September 2022

γ Range: 0 - 180DEG
γ Interval: 1.0DEG
Test System: EVERFINE GO-2000A_V1 SYSTEM V2.0.351
Humidity: 65.0%
Test Distance: 8.100m [K=1.0000]
Remarks: GRW-S18 / Z-WFL-18eS

AAI Figure

Test:U:219.9V I:0.0810A P:17.38W PF:0.9759 Lamp Flux:2431.43x1 lm		
NAME: 레이스웨이센서 / Z-WFL-18eS	TYPE:LED	WEIGHT:
SPEC.:18W	DIM.:	SERIAL No.:
MFR.: ICEPIPE	SUR.:	Shielding Angle:

Flux out:1364 lm


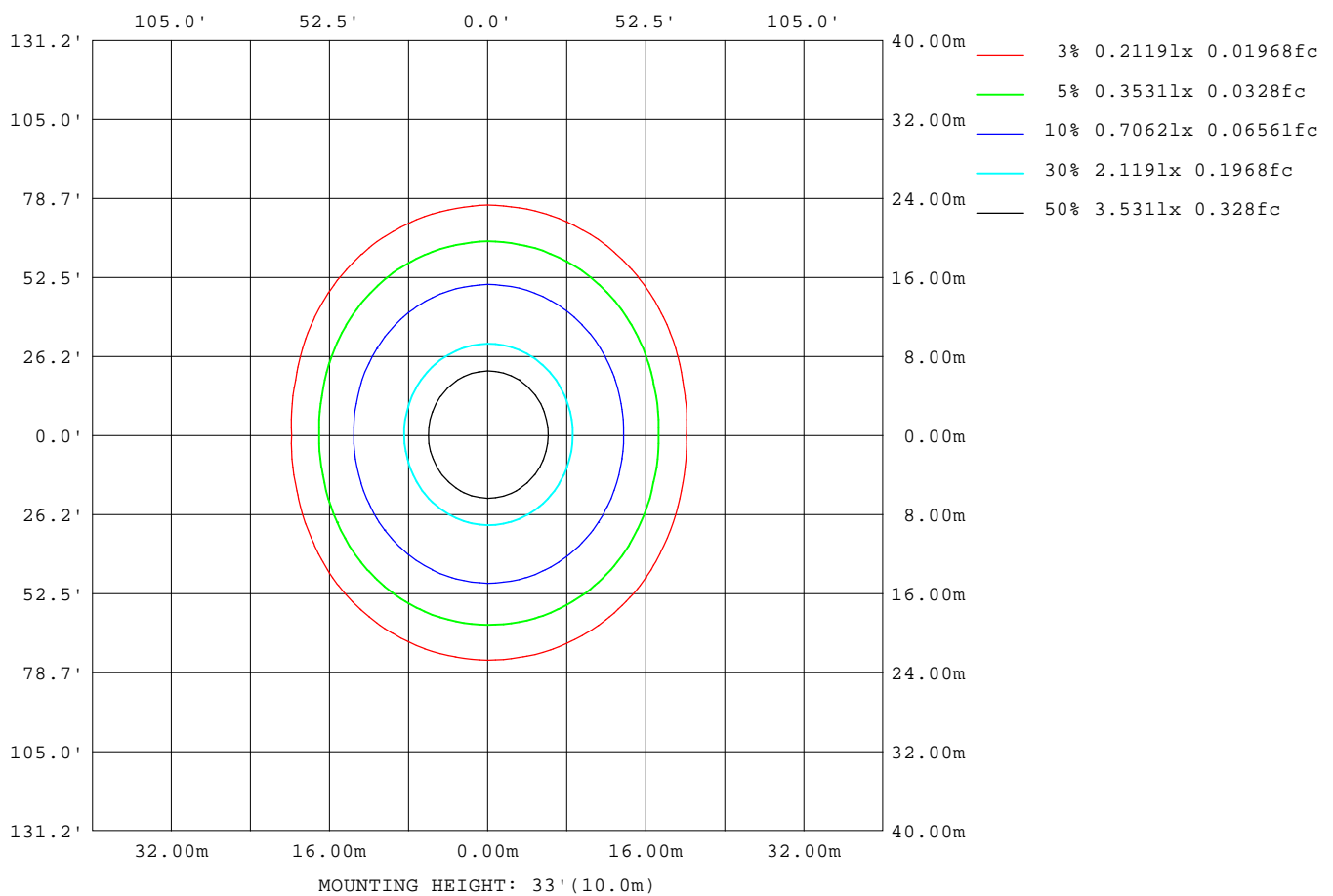
Note: The Curves indicate the illuminated area and the average illumination when the luminaire is at different distance.

C Range: 0 - 360DEG
C Interval: 15.0DEG
Test Speed: HIGH
Temperature: 25.3DEG
Operators: ARK
Test Date: 28 September 2022

γ Range: 0 - 180DEG
γ Interval: 1.0DEG
Test System: EVERFINE GO-2000A_V1 SYSTEM V2.0.351
Humidity: 65.0%
Test Distance: 8.100m [K=1.0000]
Remarks: GRW-S18 / Z-WFL-18eS

ISOLUX DIAGRAM

Test:U:219.9V I:0.0810A P:17.38W PF:0.9759 Lamp Flux:2431.43x1 lm		
NAME: 레이스웨이센서 / Z-WFL-18eS	TYPE:LED	WEIGHT:
SPEC.:18W	DIM.:	SERIAL No.:
MFR.: ICEPIPE	SUR.:	Shielding Angle:



C Range: 0 - 360DEG
C Interval: 15.0DEG
Test Speed: HIGH
Temperature: 25.3DEG
Operators: ARK
Test Date: 28 September 2022

γ Range: 0 - 180DEG
γ Interval: 1.0DEG
Test System: EVERFINE GO-2000A_V1 SYSTEM V2.0.351
Humidity: 65.0%
Test Distance: 8.100m [K=1.0000]
Remarks: GRW-S18 / Z-WFL-18eS

LED Avg.L Report

Test:U:219.9V I:0.0810A P:17.38W PF:0.9759 Lamp Flux:2431.43x1 lm		
NAME: 레이스웨이센서 / Z-WFL-18eS	TYPE:LED	WEIGHT:
SPEC.:18W	DIM.:	SERIAL No.:
MFR.: ICEPIPE	SUR.:	Shielding Angle:

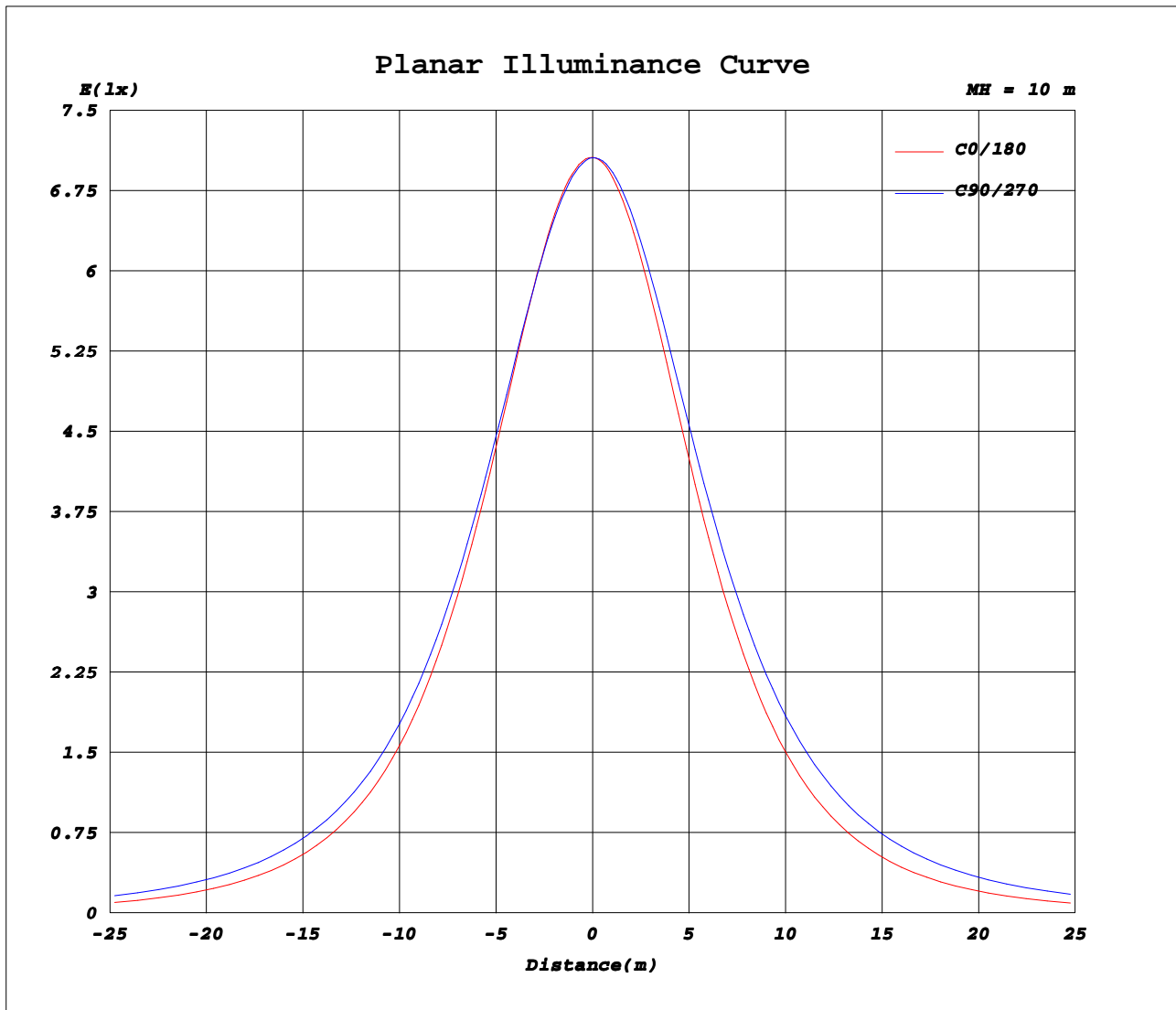
AvgL	cd/m2
L_0~180(65)av	5166
L_0~180(75)av	4233
L_0~180(85)av	2426
L_90~270(65)av	8245
L_90~270(75)av	10213
L_90~270(85)av	21747
L_45(65)av	6923
L_45(75)av	7961
L_45(85)av	15176

Standard: GB/T 29293-2012

C Range: 0 - 360DEG
C Interval: 15.0DEG
Test Speed: HIGH
Temperature:25.3DEG
Operators:ARK
Test Date:28 September 2022

γ Range: 0 - 180DEG
γ Interval: 1.0DEG
Test System:EVERFINE GO-2000A_V1 SYSTEM V2.0.351
Humidity:65.0%
Test Distance:8.100m [K=1.0000]
Remarks: GRW-S18 / Z-WFL-18eS

Planar Illuminance Curve



C Range: 0 - 360DEG
C Interval: 15.0DEG
Test Speed: HIGH
Temperature: 25.3DEG
Operators: ARK
Test Date: 28 September 2022

γ Range: 0 - 180DEG
 γ Interval: 1.0DEG
Test System: EVERFINE GO-2000A_V1 SYSTEM V2.0.351
Humidity: 65.0%
Test Distance: 8.100m [K=1.0000]
Remarks: GRW-S18 / Z-WFL-18eS

LUMINOUS DISTRIBUTION INTENSITY DATA

Test:U:219.9V I:0.0810A P:17.38W PF:0.9759 Lamp Flux:2431.43x1 lm																			
NAME: 레이스웨이센서 / Z-WFL-18eS										TYPE:LED					WEIGHT:				
SPEC.:18W										DIM.:					SERIAL No.:				
MFR.: ICEPIPE										SUR.:					Shielding Angle:				

Table--1

UNIT: cd

C(DEG) γ (DEG)	0	15	30	45	60	75	90	105	120	135	150	165	180	195	210	225	240	255	270
0	706	706	706	706	706	706	706	706	706	706	706	706	706	706	706	706	706	706	706
5	703	704	703	702	702	701	701	701	700	701	700	700	701	701	702	703	703	704	704
10	694	693	692	692	692	691	690	689	688	688	686	687	687	688	690	692	694	696	697
15	675	676	675	675	676	676	675	673	671	669	666	666	666	668	671	675	679	682	684
20	651	650	651	652	655	656	655	652	648	644	640	638	638	641	646	652	658	663	666
25	619	619	621	625	629	631	630	627	621	614	608	605	605	608	615	624	633	640	644
30	582	582	585	592	598	603	603	598	589	580	571	566	566	570	580	591	604	613	618
35	539	540	546	556	565	571	572	567	555	543	530	523	523	528	540	555	571	583	589
40	493	494	502	515	528	536	537	531	518	502	485	477	475	482	496	515	535	549	557
45	443	445	456	473	488	499	501	494	478	459	440	428	426	434	451	473	497	513	521
50	390	394	408	428	447	460	462	455	437	415	392	377	374	383	404	430	456	475	484
55	336	341	358	382	404	418	421	413	394	369	343	326	321	331	356	385	414	435	445
60	280	288	309	336	360	375	379	371	350	324	295	274	267	279	308	340	371	393	403
65	224	235	259	290	316	332	336	328	307	279	247	222	213	227	260	295	328	351	361
70	168	182	211	246	272	289	293	285	264	236	201	171	158	176	214	251	286	308	319
75	113	132	166	203	230	248	252	245	223	194	157	123	106	128	169	209	245	267	277
80	62.7	86.8	126	163	191	209	213	206	185	156	118	80.0	57.8	84.8	129	170	206	227	237
85	22.3	50.7	91.2	129	157	175	178	172	152	123	85.2	45.9	20.0	49.6	94.7	136	171	192	201
90	4.03	27.9	66.1	102	129	145	149	143	125	97.3	61.7	25.2	3.09	27.3	68.3	107	139	158	166
95	4.21	16.6	46.6	72.6	95.3	113	121	110	87.7	65.3	41.4	14.4	3.33	15.7	47.0	72.7	98.2	122	137
100	4.53	10.5	31.1	55.3	76.1	92.4	100	89.3	71.7	50.0	26.8	8.82	3.64	9.43	29.9	55.6	80.0	101	113
105	4.86	8.76	25.1	46.0	64.9	79.4	84.6	76.3	61.6	42.5	22.1	7.77	3.94	8.07	25.4	46.3	67.8	87.8	95.9
110	5.16	7.73	20.0	37.5	54.7	66.5	70.5	64.1	51.2	33.8	15.6	7.03	4.24	6.92	19.6	37.0	58.2	73.3	80.3
115	5.46	7.12	16.9	31.3	45.3	55.0	58.2	53.1	40.8	27.2	13.2	6.49	4.54	6.04	15.3	31.5	47.5	60.0	67.4
120	5.75	6.67	14.3	26.0	37.4	45.4	48.1	44.1	33.2	20.2	11.2	6.30	4.86	5.63	12.4	23.2	37.7	50.2	54.3
125	6.05	6.36	12.2	21.5	30.7	37.3	39.5	36.5	27.0	15.9	9.79	6.34	5.16	5.41	10.3	18.3	31.6	40.6	44.3
130	6.33	6.57	10.5	17.7	25.1	30.4	32.2	28.8	19.7	13.6	8.70	6.62	5.48	5.40	8.78	14.8	22.6	32.6	36.2
135	6.65	6.85	9.17	14.7	20.4	24.5	26.0	22.1	15.9	11.5	8.03	6.90	5.83	5.72	7.76	12.0	18.0	27.2	29.3
140	6.94	7.13	8.12	12.2	16.5	19.6	20.7	17.9	12.9	9.95	7.56	7.18	6.20	6.08	7.11	10.1	14.1	20.2	22.7
145	7.22	7.39	7.57	10.1	13.2	15.5	16.3	13.7	10.9	8.77	7.47	7.44	6.56	6.43	6.68	8.68	11.2	15.4	17.7
150	7.48	7.65	7.76	8.53	10.6	12.2	12.8	10.9	9.22	7.99	7.68	7.67	6.91	6.78	6.73	7.75	9.30	11.5	14.1
155	7.71	7.88	7.95	7.97	8.57	9.56	9.59	8.89	8.15	7.88	7.86	7.88	7.26	7.11	7.04	7.14	8.06	9.10	10.8
160	7.97	8.08	8.13	8.11	8.07	8.02	8.05	8.07	8.04	8.01	8.03	8.07	7.58	7.44	7.35	7.33	7.33	7.72	8.08
165	8.20	8.26	8.26	8.24	8.19	8.15	8.18	8.18	8.16	8.15	8.18	8.22	7.89	7.75	7.66	7.63	7.61	7.64	7.61
170	8.36	8.38	8.35	8.32	8.27	8.23	8.29	8.27	8.25	8.25	8.29	8.35	8.17	8.03	7.94	7.90	7.88	7.91	7.92
175	8.45	8.44	8.38	8.34	8.29	8.26	8.34	8.31	8.30	8.32	8.35	8.42	8.36	8.25	8.17	8.13	8.10	8.12	8.16
180	8.47	8.41	8.34	8.30	8.25	8.25	8.32	8.26	8.28	8.31	8.35	8.41	8.49	8.41	8.33	8.30	8.25	8.26	8.31

C Range: 0 - 360DEG

C Interval: 15.0DEG

Test Speed: HIGH

Temperature:25.3DEG

Operators:ARK

Test Date:28 September 2022

γ Range: 0 - 180DEG

γ Interval: 1.0DEG

Test System:EVERFINE GO-2000A_V1 SYSTEM V2.0.351

Humidity:65.0%

Test Distance:8.100m [K=1.0000]

Remarks: GRW-S18 / Z-WFL-18eS

LUMINOUS DISTRIBUTION INTENSITY DATA

Test:U:219.9V I:0.0810A P:17.38W PF:0.9759 Lamp Flux:2431.43x1 lm		
NAME: 레이스웨이센서 / Z-WFL-18eS	TYPE:LED	WEIGHT:
SPEC.:18W	DIM.:	SERIAL No.:
MFR.: ICEPIPE	SUR.:	Shielding Angle:

Table--2

UNIT: cd

C(DEG) γ (DEG)	285	300	315	330	345														
0	706	706	706	706	706														
5	704	705	705	705	704														
10	698	697	697	696	695														
15	684	684	682	680	678														
20	667	665	661	657	653														
25	644	641	634	628	622														
30	617	612	603	593	585														
35	588	580	567	555	544														
40	554	545	528	512	498														
45	519	506	486	467	450														
50	480	466	443	419	399														
55	440	424	397	370	346														
60	398	380	351	320	293														
65	355	337	306	272	239														
70	313	294	261	223	186														
75	270	252	218	178	135														
80	231	211	177	136	90.3														
85	194	175	141	99.6	53.2														
90	160	143	112	71.8	29.2														
95	128	105	79.8	51.4	17.4														
100	102	84.1	60.3	33.6	10.4														
105	87.7	72.6	50.5	27.5	8.36														
110	73.6	60.5	42.3	22.3	7.32														
115	62.1	50.6	34.9	18.1	6.55														
120	51.6	42.0	28.6	15.2	6.01														
125	42.5	34.6	23.7	12.8	5.61														
130	34.6	28.2	19.5	10.9	5.50														
135	27.9	22.9	16.1	9.31	5.80														
140	21.9	18.4	13.1	8.02	6.13														
145	16.9	14.5	10.7	6.99	6.47														
150	13.1	11.5	8.72	6.89	6.80														
155	10.1	8.94	7.24	7.20	7.12														
160	7.83	7.35	7.45	7.50	7.48														
165	7.60	7.66	7.74	7.79	7.82														
170	7.88	7.93	7.99	8.03	8.09														
175	8.11	8.14	8.19	8.24	8.29														
180	8.26	8.27	8.31	8.35	8.42														

C Range: 0 - 360DEG
C Interval: 15.0DEG
Test Speed: HIGH
Temperature:25.3DEG
Operators:ARK
Test Date:28 September 2022

γ Range: 0 - 180DEG
γ Interval: 1.0DEG
Test System:EVERFINE GO-2000A_V1 SYSTEM V2.0.351
Humidity:65.0%
Test Distance:8.100m [K=1.0000]
Remarks: GRW-S18 / Z-WFL-18eS

Photometric Data Table [cd]

G/C	0.0	15.0	30.0	45.0	60.0	75.0	90.0	105.0	120.0	135.0
0.0	706.2	706.3	705.9	705.9	705.9	705.7	705.7	705.6	705.6	706.0
3.0	705.1	705.6	705.0	704.4	704.4	703.9	703.1	703.6	703.0	703.3
6.0	702.0	701.9	701.2	700.8	700.3	699.4	699.5	699.3	698.3	698.2
9.0	696.6	695.7	695.2	695.0	694.3	693.7	693.0	692.4	691.2	690.8
12.0	687.7	686.9	686.3	686.3	685.8	685.9	684.6	683.8	681.8	680.6
15.0	675.4	675.6	675.0	675.3	676.1	675.7	674.8	673.2	670.7	668.6
18.0	661.8	661.0	661.0	662.6	663.8	664.3	663.2	661.2	657.5	654.8
21.0	645.4	644.6	645.0	647.7	649.5	651.3	650.2	647.7	643.0	638.2
24.0	626.2	625.7	626.9	630.8	634.4	636.1	635.6	632.7	626.5	620.7
27.0	604.8	604.8	607.0	612.2	617.1	620.3	619.8	616.0	608.6	600.7
30.0	581.8	581.9	585.0	592.1	598.2	602.7	602.7	598.3	589.5	580.4
33.0	556.7	557.0	561.8	570.8	578.8	584.3	584.5	579.6	569.2	558.1
36.0	530.4	531.1	537.1	547.4	557.6	564.5	565.1	559.6	547.8	534.6
39.0	502.0	503.6	511.3	523.4	535.4	543.6	544.4	538.8	524.9	510.1
42.0	472.7	474.8	483.7	498.7	512.0	521.4	523.1	516.9	502.1	485.2
45.0	442.7	445.2	455.6	472.8	488.3	498.8	500.6	494.0	478.3	459.3
48.0	411.5	414.6	427.1	446.2	463.6	475.7	477.7	470.9	453.4	432.7
51.0	379.4	383.5	397.9	419.1	438.2	451.4	453.9	446.4	428.0	405.8
54.0	346.7	351.8	368.5	391.5	412.2	426.8	429.2	421.4	402.5	378.5
57.0	313.6	320.0	338.4	363.7	386.2	401.2	404.2	396.2	376.6	351.3
60.0	280.3	288.0	308.7	336.1	359.6	375.3	378.7	370.9	350.2	324.0
63.0	246.5	256.0	279.2	308.4	333.2	349.5	352.7	345.0	324.2	297.0
66.0	212.5	224.0	249.7	281.2	306.7	323.5	327.1	319.3	298.2	270.6
69.0	178.7	192.3	220.9	254.6	280.8	297.7	301.5	293.9	272.5	244.5
72.0	145.2	161.5	193.0	228.4	255.0	272.6	276.1	269.2	247.5	218.9
75.0	113.2	131.8	166.3	202.9	230.1	247.9	251.5	244.8	223.3	194.3
78.0	82.18	103.9	141.0	178.6	206.1	224.1	227.5	221.2	200.0	170.8
81.0	53.52	78.74	118.4	156.0	183.6	201.8	205.2	198.9	178.0	148.9
84.0	29.08	56.98	97.43	135.3	163.1	181.2	184.9	178.6	157.9	129.1
87.0	11.46	39.63	79.47	116.9	143.9	161.3	164.1	159.0	139.8	111.9
90.0	4.027	27.88	66.10	102.2	129.3	145.4	148.5	143.1	125.0	97.33
93.0	4.071	20.74	55.89	90.16	116.3	131.9	134.7	129.8	111.8	85.10
96.0	4.280	14.50	41.53	65.98	88.15	106.9	115.3	103.9	80.20	58.32
99.0	4.466	11.04	32.43	56.73	78.25	94.87	103.9	91.78	73.29	51.06
102.0	4.656	9.681	28.67	51.93	71.44	87.39	93.86	84.20	67.89	47.26
105.0	4.861	8.758	25.06	46.03	64.93	79.39	84.60	76.30	61.59	42.47
108.0	5.042	8.035	21.69	40.65	58.69	71.48	75.97	68.85	55.26	36.98
111.0	5.224	7.607	19.32	36.15	52.70	64.12	67.90	61.71	49.17	32.60
114.0	5.405	7.240	17.44	32.39	47.03	57.23	60.54	55.15	43.07	28.28
117.0	5.572	6.925	15.75	29.06	42.02	50.95	53.92	49.26	37.22	23.89
120.0	5.753	6.673	14.28	26.01	37.43	45.41	48.05	44.09	33.22	20.23
123.0	5.930	6.474	13.01	23.21	33.27	40.39	42.78	39.38	30.01	17.59
126.0	6.102	6.377	11.86	20.68	29.51	35.84	37.94	35.07	25.26	15.40
129.0	6.279	6.517	10.83	18.43	26.11	31.69	33.56	29.60	21.01	14.02
132.0	6.465	6.670	9.934	16.46	23.07	27.94	29.56	26.52	17.82	12.70
135.0	6.651	6.846	9.169	14.73	20.36	24.55	25.97	22.08	15.90	11.55
138.0	6.827	7.010	8.517	13.13	17.93	21.49	22.68	19.80	13.78	10.55
141.0	6.999	7.177	7.940	11.72	15.75	18.75	19.73	17.15	12.54	9.674
144.0	7.171	7.339	7.534	10.52	13.80	16.31	17.16	14.52	11.30	8.973
147.0	7.329	7.492	7.646	9.442	12.10	14.09	14.79	12.60	10.14	8.426
150.0	7.483	7.651	7.757	8.532	10.60	12.21	12.77	10.89	9.217	7.993
153.0	7.617	7.786	7.873	7.920	9.297	10.54	10.95	9.578	8.512	7.827
156.0	7.762	7.925	7.985	7.999	8.230	9.113	9.124	8.619	7.992	7.902
159.0	7.910	8.041	8.096	8.074	8.050	8.045	8.159	8.059	8.013	7.985
162.0	8.068	8.167	8.180	8.162	8.115	8.069	8.092	8.111	8.087	8.064
165.0	8.199	8.259	8.259	8.236	8.189	8.148	8.175	8.180	8.161	8.148
168.0	8.315	8.338	8.320	8.287	8.245	8.199	8.245	8.255	8.217	8.218
171.0	8.389	8.403	8.357	8.320	8.273	8.241	8.296	8.287	8.264	8.269
174.0	8.440	8.427	8.380	8.338	8.296	8.259	8.338	8.315	8.287	8.310
177.0	8.482	8.436	8.380	8.333	8.292	8.264	8.338	8.301	8.292	8.324
180.0	8.473	8.408	8.338	8.296	8.250	8.250	8.320	8.264	8.282	8.310
G/C	150.0	165.0	180.0	195.0	210.0	225.0	240.0	255.0	270.0	285.0
0.0	705.9	705.8	706.2	706.3	705.9	705.9	705.9	705.7	705.7	705.6
3.0	703.4	703.6	703.9	703.8	704.4	704.9	705.0	705.5	705.6	705.7
6.0	698.2	697.8	698.3	698.7	699.8	701.0	702.0	702.7	703.4	703.9
9.0	690.1	690.2	690.5	691.2	692.7	694.6	696.6	697.7	698.6	699.2
12.0	679.5	679.0	679.5	680.8	683.5	685.8	688.8	690.9	692.4	692.9
15.0	666.3	665.7	666.3	667.9	671.4	674.9	679.2	682.2	684.4	684.2
18.0	651.1	649.8	650.2	652.7	657.4	662.0	667.3	671.8	674.2	674.4
21.0	633.8	631.9	632.4	634.8	640.5	647.1	654.0	658.9	662.3	662.7
24.0	614.5	611.8	612.1	615.0	621.9	630.2	638.8	644.8	649.0	648.8
27.0	593.6	589.6	589.9	593.6	601.8	611.1	622.1	629.5	634.6	634.0
30.0	570.6	566.2	565.7	570.2	579.6	591.1	604.2	613.4	618.3	617.3

C Range: 0 - 360DEG
C Interval: 15.0DEG
Test Speed: HIGH
Temperature: 25.3DEG
Operators: ARK
Test Date: 28 September 2022

γ Range: 0 - 180DEG
γ Interval: 1.0DEG
Test System: EVERFINE GO-2000A_V1 SYSTEM V2.0.351
Humidity: 65.0%
Test Distance: 8.100m [K=1.0000]
Remarks: GRW-S18 / Z-WFL-18eS

Photometric Data Table [cd]

33.0	546.8	540.8	540.3	545.1	555.7	569.6	584.5	595.2	601.2	599.9
36.0	521.3	513.9	513.5	518.7	531.2	546.8	563.9	575.7	582.6	581.2
39.0	494.8	486.3	485.2	491.3	505.2	523.2	542.3	555.9	563.4	561.1
42.0	467.7	457.7	455.7	462.7	478.4	498.7	519.9	534.6	542.7	540.4
45.0	439.7	428.1	425.7	433.6	451.3	473.2	496.6	513.2	521.4	518.6
48.0	411.5	397.9	395.0	403.2	423.1	446.9	472.2	490.5	499.6	495.7
51.0	382.3	367.1	363.5	372.6	394.2	420.9	447.6	466.5	476.5	472.2
54.0	353.2	336.2	331.6	342.0	365.3	393.9	422.5	442.7	452.7	448.0
57.0	324.0	305.0	299.4	310.6	336.4	366.9	397.1	418.1	428.2	423.3
60.0	294.9	273.9	267.4	279.2	307.6	339.9	371.3	393.0	403.3	397.8
63.0	265.8	242.6	234.6	247.9	278.9	312.7	345.5	367.6	378.1	372.3
66.0	237.4	211.7	201.9	216.8	250.7	286.3	319.6	342.2	352.8	346.8
69.0	209.6	181.1	169.4	186.3	222.7	259.9	294.2	316.8	327.0	321.1
72.0	182.8	151.6	137.2	156.3	195.5	234.3	269.1	291.7	301.9	295.7
75.0	156.9	123.0	105.9	128.1	169.4	209.4	244.8	266.9	277.1	270.5
78.0	133.1	96.37	76.22	101.4	144.8	185.5	221.1	242.8	252.9	246.2
81.0	110.9	72.32	49.19	76.88	121.7	162.9	198.3	219.8	229.6	223.0
84.0	91.13	51.73	26.26	55.73	101.0	142.2	177.2	198.3	207.6	200.9
87.0	74.36	35.71	10.02	38.86	82.75	124.1	157.4	176.8	184.8	178.7
90.0	61.71	25.16	3.090	27.29	68.25	107.1	138.7	157.7	166.0	159.7
93.0	51.86	18.56	3.184	20.09	57.89	94.35	124.8	143.2	150.8	144.9
96.0	36.37	12.42	3.389	13.42	40.90	64.63	89.95	115.3	129.6	118.4
99.0	27.72	9.320	3.574	9.851	30.72	56.53	81.39	102.7	117.1	104.8
102.0	24.90	8.343	3.761	8.851	27.35	48.59	76.31	95.78	106.3	96.35
105.0	22.13	7.769	3.942	8.070	25.40	46.32	67.84	87.79	95.88	87.68
108.0	18.64	7.232	4.128	7.325	21.64	41.36	60.89	79.62	85.91	78.93
111.0	15.33	6.873	4.295	6.690	18.77	35.24	56.75	69.29	77.71	71.30
114.0	13.55	6.558	4.476	6.177	15.75	33.17	50.01	61.62	69.94	64.33
117.0	12.25	6.376	4.672	5.844	14.20	27.22	41.43	56.08	62.54	57.77
120.0	11.22	6.302	4.862	5.629	12.36	23.20	37.65	50.20	54.34	51.65
123.0	10.38	6.265	5.043	5.471	11.05	20.25	34.85	44.68	47.31	45.99
126.0	9.525	6.392	5.215	5.383	9.923	17.52	29.77	38.75	42.44	40.81
129.0	8.871	6.554	5.411	5.345	9.034	15.46	24.13	34.15	37.41	36.08
132.0	8.404	6.731	5.624	5.516	8.330	13.56	20.53	30.22	33.41	31.76
135.0	8.033	6.899	5.834	5.725	7.761	12.02	18.03	27.19	29.30	27.88
138.0	7.725	7.070	6.047	5.935	7.330	10.76	15.34	22.12	25.17	24.07
141.0	7.493	7.228	6.271	6.153	7.004	9.733	13.46	19.10	21.66	21.05
144.0	7.441	7.390	6.493	6.362	6.743	8.909	11.74	16.28	18.51	17.87
147.0	7.571	7.539	6.707	6.571	6.582	8.262	10.37	13.69	16.31	15.08
150.0	7.682	7.674	6.912	6.776	6.726	7.753	9.302	11.53	14.13	13.09
153.0	7.790	7.804	7.122	6.962	6.908	7.364	8.483	9.851	12.02	11.22
156.0	7.901	7.921	7.330	7.166	7.102	7.102	7.864	8.758	10.19	9.585
159.0	7.985	8.036	7.516	7.362	7.293	7.278	7.403	7.932	8.470	8.227
162.0	8.086	8.134	7.711	7.566	7.484	7.454	7.451	7.465	7.488	7.404
165.0	8.175	8.222	7.893	7.748	7.660	7.627	7.614	7.636	7.614	7.603
168.0	8.250	8.315	8.064	7.920	7.832	7.799	7.772	7.799	7.800	7.771
171.0	8.306	8.366	8.208	8.068	7.985	7.952	7.925	7.952	7.976	7.928
174.0	8.347	8.408	8.329	8.203	8.124	8.091	8.050	8.082	8.115	8.064
177.0	8.357	8.422	8.431	8.320	8.250	8.208	8.176	8.189	8.245	8.185
180.0	8.347	8.413	8.487	8.408	8.329	8.301	8.250	8.259	8.310	8.264
G/C	300.0	315.0	330.0	345.0						
0.0	705.6	706.0	705.9	705.8						
3.0	705.9	706.1	706.1	705.9						
6.0	703.8	703.9	703.4	703.2						
9.0	699.6	698.7	698.3	697.2						
12.0	692.6	691.7	689.9	688.5						
15.0	684.0	682.2	679.7	677.6						
18.0	673.2	669.9	666.9	663.5						
21.0	660.2	656.2	651.6	647.3						
24.0	646.0	640.0	634.4	628.6						
27.0	629.6	622.5	615.0	607.8						
30.0	612.0	603.1	593.3	585.4						
33.0	593.5	582.0	570.7	560.9						
36.0	573.2	559.8	546.5	535.1						
39.0	551.8	536.5	520.7	507.7						
42.0	529.4	511.7	494.0	479.3						
45.0	505.8	486.4	466.7	449.7						
48.0	482.3	460.4	437.9	419.4						
51.0	457.6	433.7	409.1	388.5						
54.0	432.2	406.6	379.6	356.6						
57.0	406.3	379.1	350.2	324.8						
60.0	380.2	351.5	320.2	292.5						
63.0	354.2	324.0	290.8	260.3						
66.0	327.9	296.7	261.9	228.1						

C Range: 0 - 360DEG
C Interval: 15.0DEG
Test Speed: HIGH
Temperature: 25.3DEG
Operators: ARK
Test Date: 28 September 2022

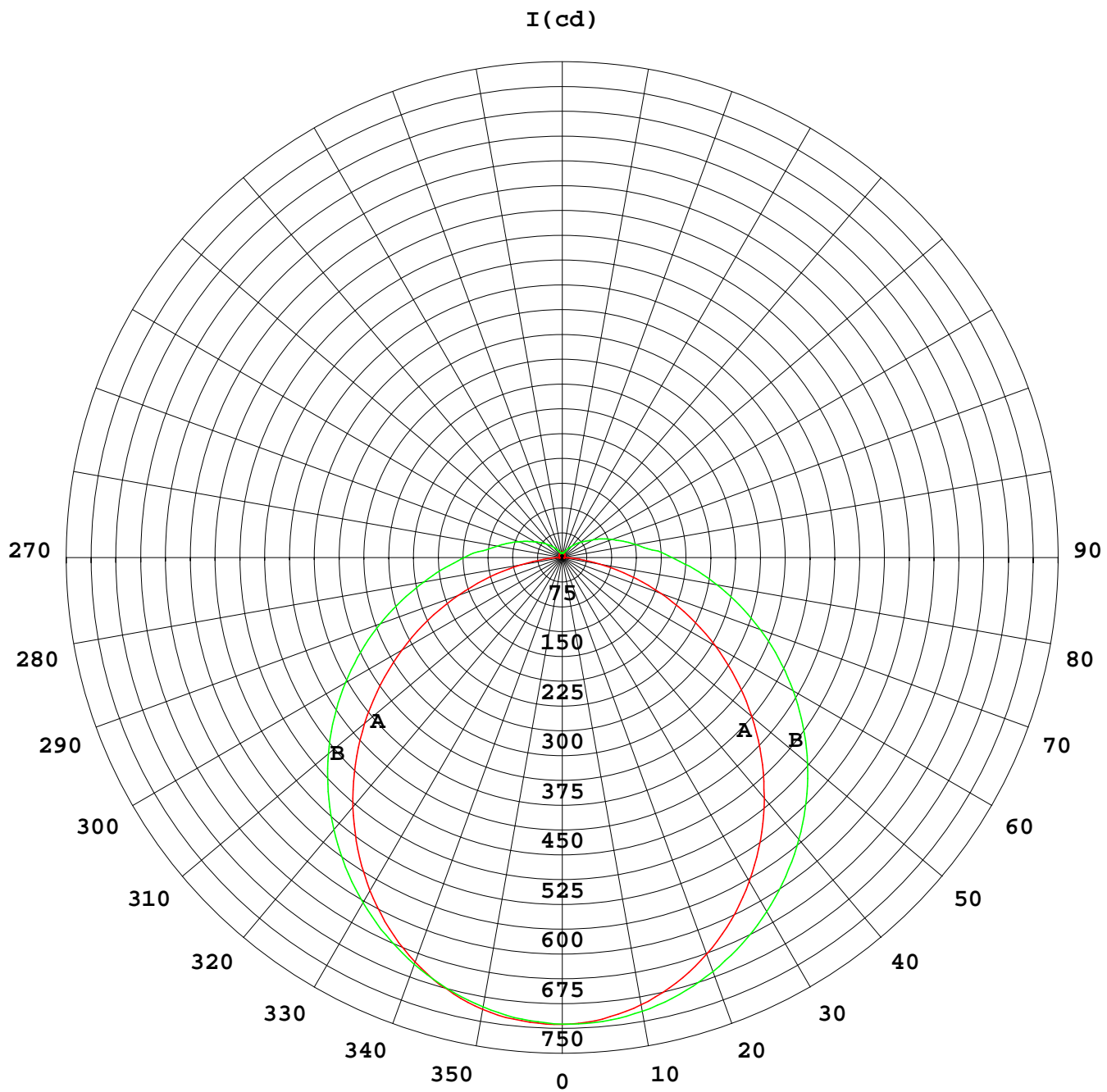
γ Range: 0 - 180DEG
γ Interval: 1.0DEG
Test System: EVERFINE GO-2000A_V1 SYSTEM V2.0.351
Humidity: 65.0%
Test Distance: 8.100m [K=1.0000]
Remarks: GRW-S18 / Z-WFL-18eS

Photometric Data Table [cd]

69.0	302.0	269.6	232.9	196.3
72.0	276.6	243.2	204.9	165.3
75.0	251.7	217.6	177.7	135.2
78.0	227.3	193.0	152.0	107.7
81.0	204.0	169.6	128.0	81.99
84.0	182.1	147.8	106.3	59.71
87.0	161.1	128.5	86.98	41.67
90.0	142.6	111.5	71.81	29.16
93.0	128.3	98.54	60.86	21.68
96.0	97.39	72.01	45.63	15.08
99.0	86.03	61.87	35.07	11.09
102.0	79.65	56.82	30.98	9.434
105.0	72.61	50.51	27.48	8.357
108.0	64.81	45.44	24.21	7.669
111.0	58.58	40.74	21.35	7.145
114.0	52.53	36.26	18.83	6.684
117.0	47.01	32.22	16.83	6.317
120.0	42.02	28.62	15.16	6.006
123.0	37.45	25.53	13.71	5.754
126.0	33.25	22.75	12.43	5.541
129.0	29.44	20.25	11.27	5.442
132.0	26.01	18.05	10.21	5.605
135.0	22.91	16.07	9.313	5.799
138.0	20.14	14.25	8.513	5.995
141.0	17.62	12.61	7.785	6.195
144.0	15.26	11.15	7.178	6.399
147.0	13.23	9.862	6.721	6.600
150.0	11.45	8.716	6.888	6.800
153.0	9.872	7.755	7.079	6.995
156.0	8.535	7.213	7.261	7.189
159.0	7.449	7.389	7.442	7.408
162.0	7.469	7.571	7.622	7.631
165.0	7.660	7.743	7.785	7.822
168.0	7.828	7.897	7.939	7.989
171.0	7.967	8.036	8.078	8.143
174.0	8.101	8.152	8.199	8.268
177.0	8.204	8.259	8.292	8.352
180.0	8.273	8.310	8.352	8.417

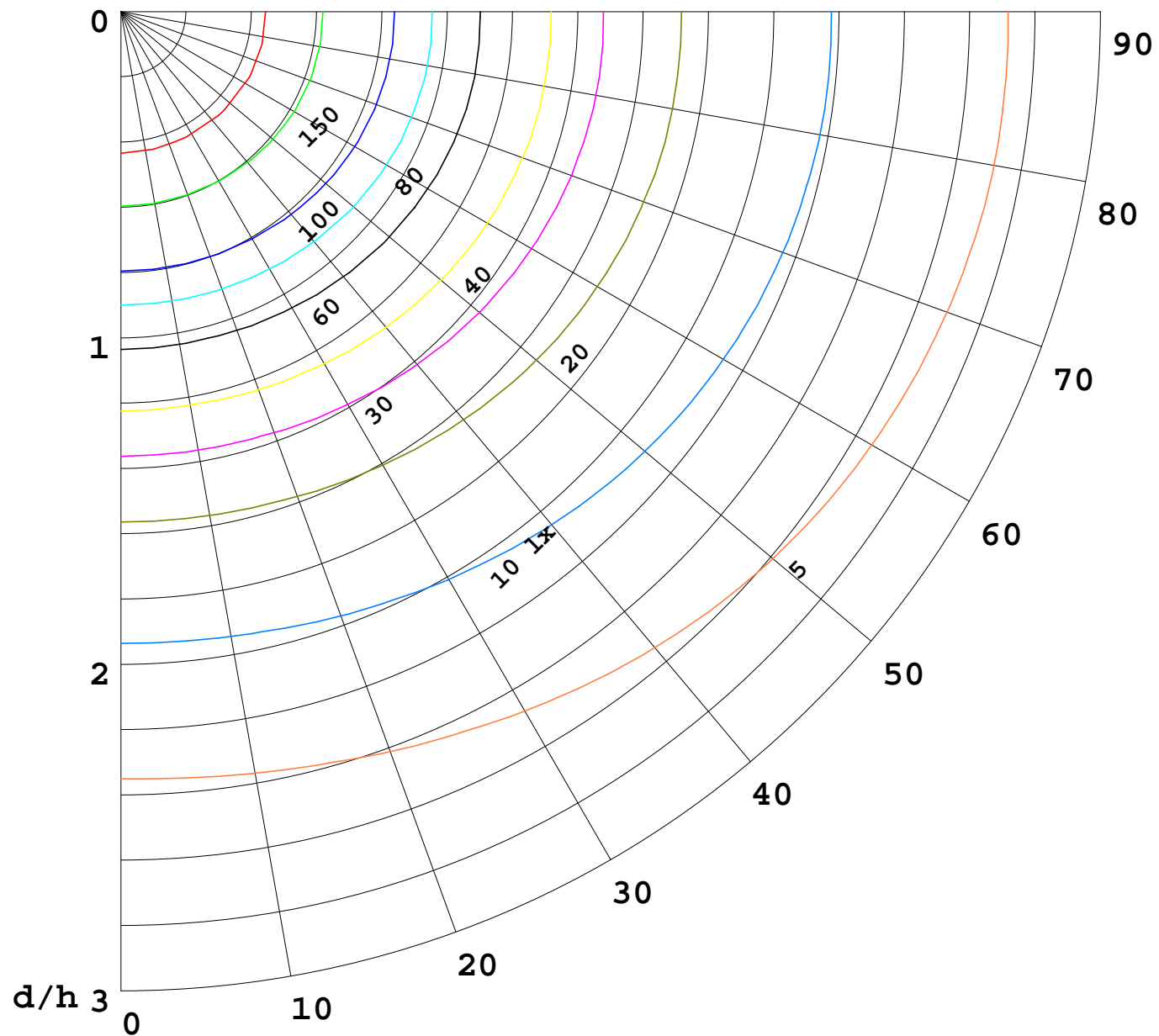
C Range: 0 - 360DEG
C Interval: 15.0DEG
Test Speed: HIGH
Temperature: 25.3DEG
Operators: ARK
Test Date: 28 September 2022

γ Range: 0 - 180DEG
γ Interval: 1.0DEG
Test System: EVERFINE GO-2000A_V1 SYSTEM V2.0.351
Humidity: 65.0%
Test Distance: 8.100m [K=1.0000]
Remarks: GRW-S18 / Z-WFL-18eS



1000 lm

$K = 1$



F = 1000 lm
K = 0.7
Hcc = 0.8 m
Hfc = 0.0 m
Eave = 100 lx

	Pcc	Pw	Pfc
————	70	50	30
————	50	30	20

