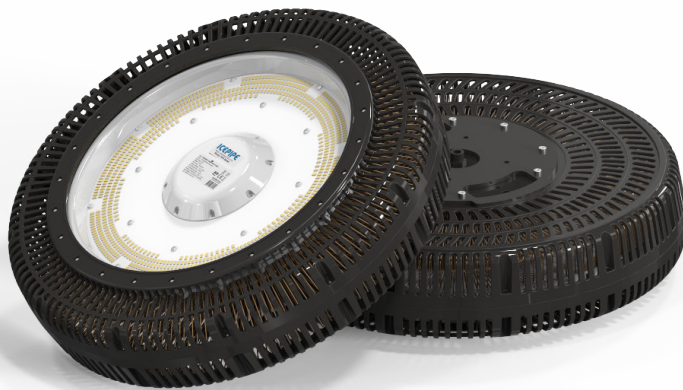


# LED FLOOD LIGHT

## CD4000-400W



- LED replacement for 1 kW MH with 60% electricity saving
- Usable at indoor and outdoor with various mounting options
- Compact and versatile design with 360° installation angle
- Circular LED array for excellent luminance uniformity
- Flicker-free for eye comfort
- Embedded fire protection system and surge protector
- Superb heat dissipation through ICEPIPE FDP Technology
- Ultraviolet free, no mercury and lead-free RoHS Compliance



### SPECIFICATION

#### ELECTRICAL

Wattage	400 W
Power Input	AC 200 - 277 V
Frequency	50/60 Hz
Power Factor (PF)	> 0.96
THD	< 15%
Protection Circuit	4 kV

#### CONSTRUCTION

Size	ø 500 x 132 mm
Weight	8 kg
Material	Polycarbonate, STS, Tempered Glass
Heatsink	Copper ICEPIPE Heatsink
IP Rating	IP67
Operating Temperature	-30°C ~ 50°C (-22°F ~ 122°F)
Installation Angle	360°

#### OPTICS

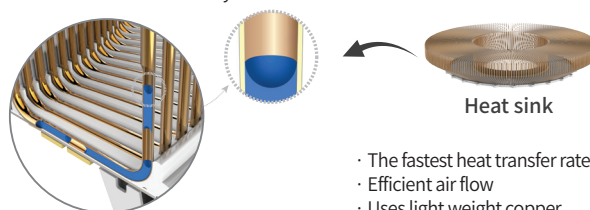
Lumen output	48,000 lm
Efficacy	120 lm/W
Replacement	MH 1 kW
CCT	5,700 K
LED Package Life time	50,000 hours (25°C) <small>*LED package life time according to industry standard (LM80). *High operating temperature may shorten life span of LED package and LED lamp.</small>
CRI	82 Ra
Beam Angle	[Standard] 100° [Option] Lens 20°, 30°, 45°, 60° [Option] Dome Diffuser 130° [Option] Diffuser Glass 110°

### FEATURES



#### Highly Efficient ICEPIPE heatsink

ICEPIPE heatsink was created by our patented Fluid Dynamic Pressure Technology, which enables heat dissipation 200 times faster (40,000 W/m · K) than that of conventional aluminum (Al) heatsink. Liquid circulation takes place inside the pipe, traveling through the coil and cooling down heat from the LEDs in the most efficient way.



- The fastest heat transfer rate
- Efficient air flow
- Uses light weight copper

### APPLICATION



Outdoor Sports Facilities



Golf Course



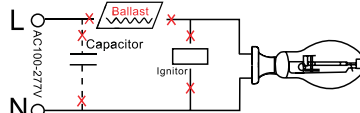
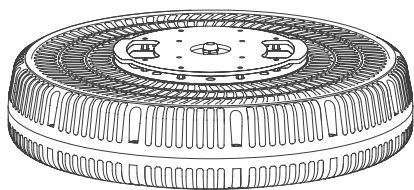
Outdoor Parking Lot



Gymnasium

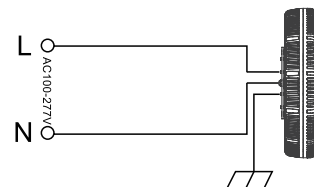


## INSTALLATION



### Step 1.

Turn off the power before installation. Remove the old ballast, capacitor and ignitor (if existing)



### Step 2.

Connect the wire from the supply to the fixture and make sure the ground from the supply is connected to the ground from the fixture.

## COVER OPTIONS

Type	Standard	Option					
Cover							
	Clear	Lens				Dome Diffuser 2	Diffuser Glass 2
LIGHT DISTRIBUTION CURVE							
Beam Angle	100°	20°	30°	45°	60°	130°	110°

## PACKING

Dimension	① Single Unit Box	② Pallet
(Unit : mm) • Size : $\phi 500 \times 132$ mm • Weight : 8 kg	(Unit : mm) 	(Unit : mm) 

Type	① Single Unit Box	② Pallet	20ft Container-Palletized	Remarks
Quantity	1	20	200 (10 Pallets)	1 Pallets 2R x 2R x 5L = 20pcs
Dimension(mm)	550 x 550 x 330	1,100 x 1,100 x 1,800	5,500 x 2,200 x 1,800	
GWT(kg)	12.00	258	2,580	
CBM	0.099	2.18	21.80	

## ⚠ WARNINGS

- Do not use with direct current and ballast.
- This lamp is non-dimmable, do not connect with dimmer
- This lamp must be installed straight downward and cannot be installed in different orientation.
- Do not install the lamp in an enclosed space.
- Do not install on any other shade that is not provided by ICEPIPE.
- Please read the instruction manual carefully before installation.



\* Please refer to our full warranty terms and contact your sales representative for details.

