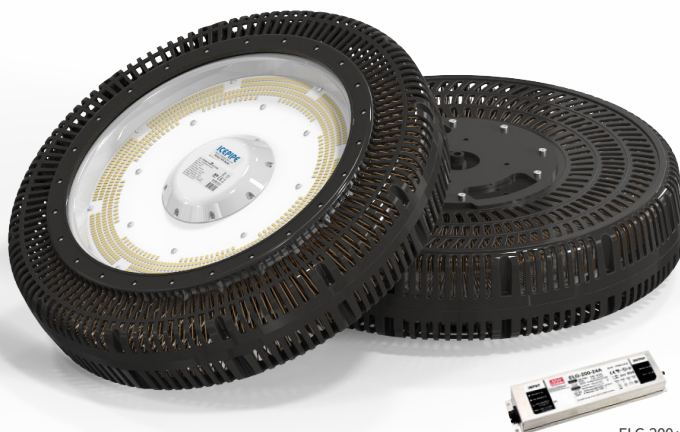


LED FLOOD LIGHT CD4010-400W

External Driver



- LED replacement for 1 kW MH with 60% electricity saving
- Usable at indoor and outdoor with various mounting options
- Compact and versatile design with 360° installation angle
- Circular LED array for excellent luminance uniformity
- Flicker-free for eye comfort
- Embedded fire protection system and surge protector
- Superb heat dissipation through ICEPIPE FDP Technology
- Ultraviolet free, no mercury and lead-free RoHS Compliance



ELG-200x2

SPECIFICATION

ELECTRICAL

Wattage	400 W
Power Input	AC 100 - 240 V
Frequency	50/60 Hz
Power Factor (PF)	> 0.9
THD	< 15%
Protection Circuit	4 kV

CONSTRUCTION

Size	ø 500 x 132 mm *Driver : 244 x 71 x 37.5 mm(H)
Weight	7.5 kg *Driver : 2.2 kg (2EA, 1EA=1.1kg)
Material	Polycarbonate, STS, Tempered Glass
Heatsink	Copper ICEPIPE Heatsink
IP Rating	IP67
Operating Temperature	-30°C ~ 50°C (-22°F ~ 122°F)
Installation Angle	360°

OPTICS

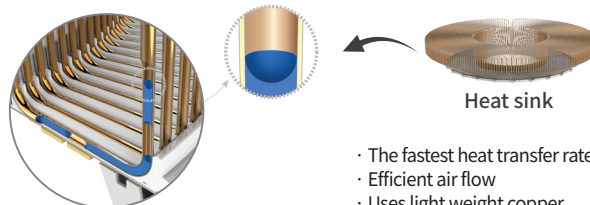
Lumen output	48,000 lm
Efficacy	120 lm/W
Replacement	MH 1 kW
CCT	5,700 K
LED Package Life time	50,000 hours (25°C) <small>*LED package life time according to industry standard (LM80). *High operating temperature may shorten life span of LED package and LED lamp.</small>
CRI	82 Ra
Beam Angle	[Standard] 100° [Option] Lens 20°, 30°, 45°, 60° [Option] Dome Diffuser 130° [Option] Diffuser Glass 110°

FEATURES



Highly Efficient ICEPIPE heatsink

ICEPIPE heatsink was created by our patented Fluid Dynamic Pressure Technology, which enables heat dissipation 200 times faster (40,000 W/m·K) than that of conventional aluminum (Al) heatsink. Liquid circulation takes place inside the pipe, traveling through the coil and cooling down heat from the LEDs in the most efficient way.



- The fastest heat transfer rate
- Efficient air flow
- Uses light weight copper

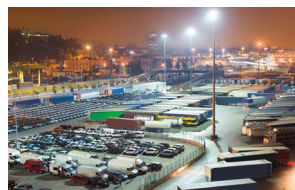
APPLICATION



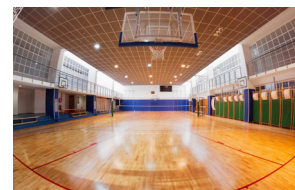
Building Exterior



Outdoor Sports Facilities



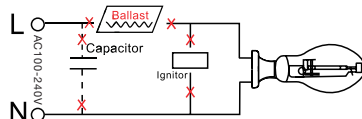
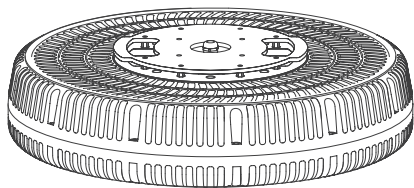
Outdoor Parking Lot



Gymnasium

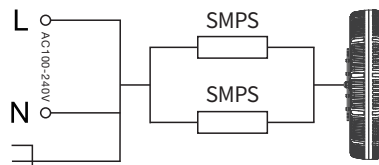


INSTALLATION



Step 1.

Turn off the power before installation. Remove the old ballast, capacitor and ignitor (if existing)



Step 2.

Connect the wire from the supply to the fixture and make sure the ground from the supply is connected to the ground from the fixture.

COVER OPTIONS

Type	Standard	Option					
Cover							
	Clear	Lens				Dome Diffuser 2	Diffuser Glass 2
LIGHT DISTRIBUTION CURVE							
Beam Angle	100°	20°	30°	45°	60°	130°	110°

PACKING

Dimension
(Unit : mm) · Size : ϕ 500 x 132 mm · Weight : 7.5 kg

① Single Unit Box
(Unit : mm)

② Pallet
(Unit : mm)

Type	① Single Unit Box	② Pallet	20ft Container-Palletized	Remarks
Quantity	1	20	200 (10 Pallets)	1 Pallets 2R x 2R x 5L = 20pcs
Dimension(mm)	550 x 550 x 330	1,100 x 1,100 x 1,800	5,500 x 2,200 x 1,800	
GWT(kg)	14.00	298	2,980	
CBM	0.099	2.18	21.80	

⚠ WARNINGS

- Do not use with direct current and ballast.
- This lamp is non-dimmable, do not connect with dimmer
- This lamp must be installed straight downward and cannot be installed in different orientation.
- Do not install the lamp in an enclosed space.
- Do not install on any other shade that is not provided by ICEPIPE.
- Please read the instruction manual carefully before installation.



* Please refer to our full warranty terms and contact your sales representative for details.

