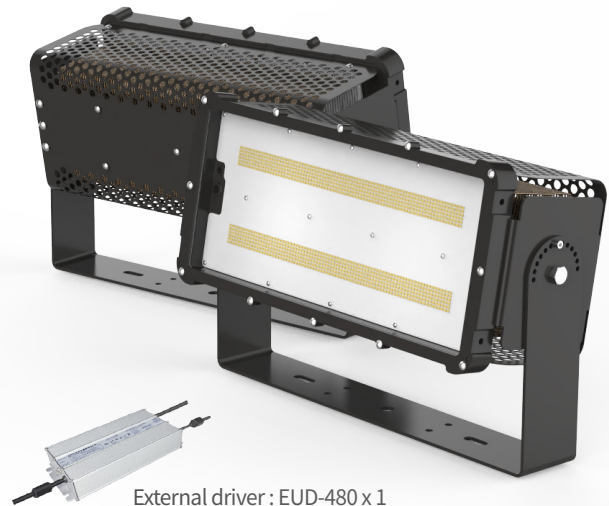


# LED FLOOD LIGHT RCT-400

External Driver



- External driver for safe & easy repair
- Replace MH 1 kW
- Excellent heat dissipation by ICEPIPE FDP technology
- Improved durability by metal housing & glass cover
- IP67 (driver & lamp) for outdoor use
- Eco-friendly & RoHS compliant (UV/Lead/Mercury-free)



External driver : EUD-480 x 1

## SPECIFICATION

### ELECTRICAL

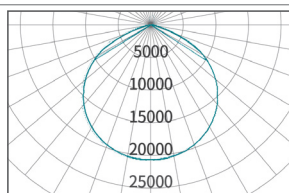
Wattage	400 W
Power Input	AC 220 V
Frequency	50/60 Hz
Power Factor (PF)	> 0.9
THD	< 15%
Protection Circuit	6 kV

### CONSTRUCTION

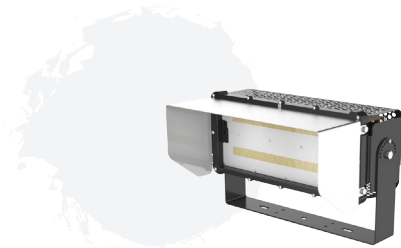
Size	515 x 171 x 326 mm
Weight	10.5 kg *Driver not incl.
Material	Steel
Heatsink	Copper ICEPIPE Heatsink
IP Rating	IP67
Operating Temperature	-30°C ~ 50°C (-22°F ~ 122°F)
Installation Angle	360°

### OPTICS

Lumen output	58,000 lm
Efficacy	145 lm/W
Replacement	MH 1 kW
CCT	5,700 K
LED Package Life time	50,000 hours (25°C) <small>*LED package life time according to industry standard (LM80). *High operating temperature may shorten life span of LED package and LED lamp.</small>
CRI	80 Ra
Beam Angle	120°



## COVER OPTION : Sun visor

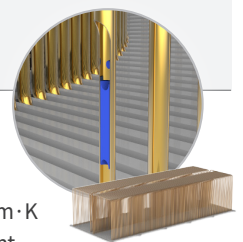


## TECHNOLOGY

### 1. FDP Technology

Patent technology of ICEPIPE-Improved heat dissipation by fast heat transfer using FDP

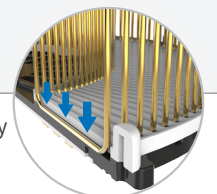
- The fastest heat transfer rate by excellent air flow
- Sufficient heat dissipation area
- ICEPIPE's thermal conductivity = 40,000 W/m · K
- Less raw materials used reducing the weight and production cost



### 2. Clamping Technology

Unique heat dissipation technology using directional and elastic clamps

- Mechanical coupling to use oscillating capillary tube heatsink as heat dissipation material
- Mechanical bonding of heating part and heatsink made excellent durability
- Pressurized assembly by using elastic deformation of clamp
- Improved heat dissipation performance and reduced material cost compared to conventional adhesive (epoxy, etc.) bonding methods



## APPLICATION



Outdoor Sports Facilities



Port

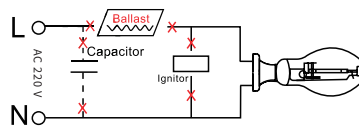
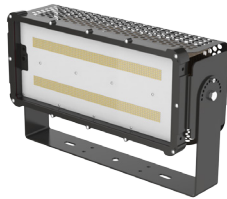


Factory



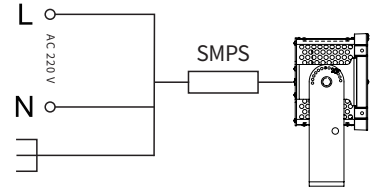
Outdoor Parking Lot

## INSTALLATION



### Step 1.

Turn off the power before installation.  
Remove the old ballast, capacitor and ignitor (if existing)



### Step 2.

Connect the wire from the supply to the fixture and make sure the ground from the supply is connected to the ground from the fixture.

## PACKING

Dimension
(Unit : mm)
· Size : 515 x 171 x 326 mm
· Weight : 10.5 kg *Driver not incl.

① Single Unit Box
(Unit : mm)

② Pallet
(Unit : mm)

Type	① Single Unit Box	② Pallet	20ft Container-Palletized	Remarks
Quantity	1	30	300 (10 Pallets)	[1 Pallets] 3R x 2R x 5L = 30pcs
Dimension(mm)	280 x 590 x 270	840 x 1,180 x 1,500	1,680 x 5,900 x 1,500	
GWT(kg)	13.5	405	4,050	
CBM	0.044	1.32	13.2	

## ⚠ WARNINGS

- Do not use with direct current and ballast.
- This lamp is non-dimmable, do not connect with dimmer
- This lamp must be installed straight downward and cannot be installed in different orientation.
- Do not install the lamp in an enclosed space
- Do not install on any other shade that is not provided by ICEPIPE.
- Please read the instruction manual carefully before installation.



\* Please refer to our full warranty terms and contact your sales representative for details.

