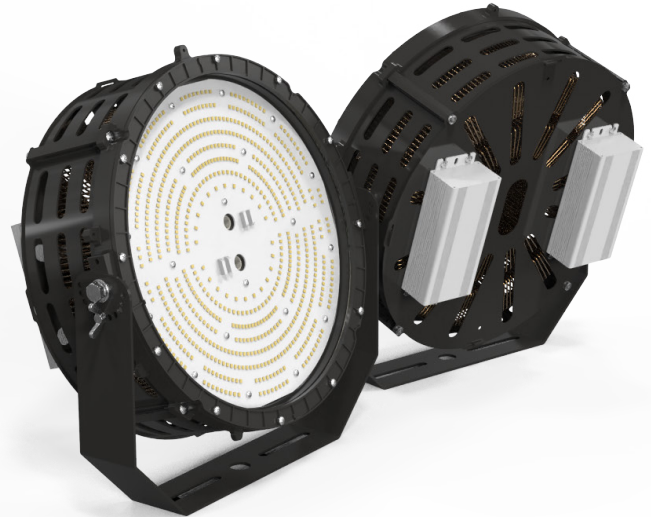


LED FLOOD LIGHT NCD-400

External Driver



- High wattage but compact size
- External driver for safe & easy repair
- Usable at indoor and outdoor with various mounting options
- Compact and versatile design with 360° installation angle
- IP66 (driver & lamp) for outdoor use
- Excellent heat dissipation by ICEPIPE FDP technology
- Eco-friendly & RoHS compliant (UV/Lead/Mercury-free)



SPECIFICATION

ELECTRICAL

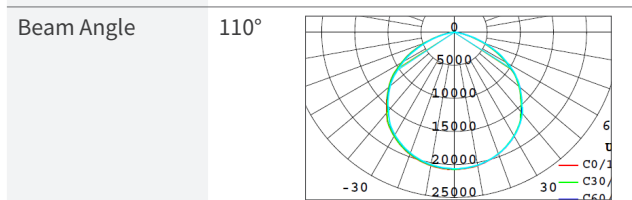
Wattage	400 W
Input Voltage	AC 220 V
Frequency	50/60 Hz
Power Factor (PF)	> 0.95
THD	< 15%
Protection Circuit	L-L : 4kV, L-F.G : 2kV

CONSTRUCTION

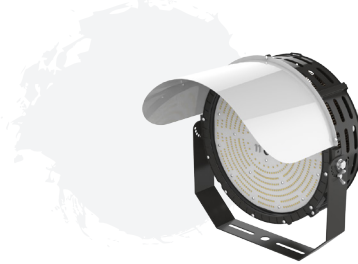
Size	ø388 x 248 mm
Weight	8.6 kg (SMPS incl.) *SMPS : 1.2 kg
Material	PC, Aluminum, Steel
Heatsink	Copper ICEPIPE Heatsink
IP Rating	IP66
Operating Temperature	-30°C ~ 50°C (-22°F ~ 122°F)
Installation Angle	360°

OPTICS

Lumen output	56,000 lm
Efficacy	140 lm/W
Replacement	MH 1 kW
CCT	5,700 K
LED Package Life time	50,000 hours (25°C) <small>*LED package life time according to industry standard (LM80). *High operating temperature may shorten life span of LED package and LED lamp.</small>
CRI	> 80 Ra



COVER OPTION : Sun visor

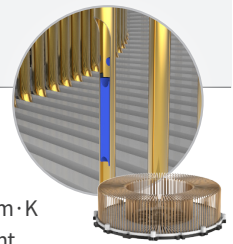


TECHNOLOGY

1. FDP Technology

Patent technology of ICEPIPE-Improved heat dissipation by fast heat transfer using FDP

- The fastest heat transfer rate by excellent air flow
- Sufficient heat dissipation area
- ICEPIPE's thermal conductivity = 40,000 W/m · K
- Less raw materials used reducing the weight and production cost



2. Clamping Technology

Unique heat dissipation technology using directional and elastic clamps

- Mechanical coupling to use oscillating capillary tube heatsink as heat dissipation material
- Mechanical bonding of heating part and heatsink made excellent durability
- Pressurized assembly by using elastic deformation of clamp
- Improved heat dissipation performance and reduced material cost compared to conventional adhesive (epoxy, etc.) bonding methods



APPLICATION



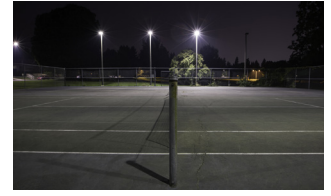
Indoor Sports Facilities



Building Exterior

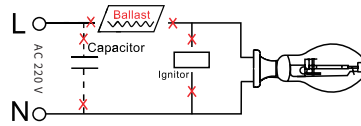


Outdoor Parking Lot



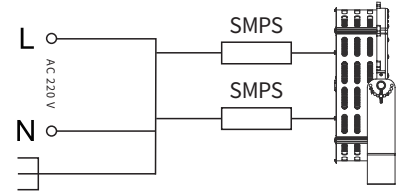
Outdoor Sports Facilities

INSTALLATION



Step 1.

Turn off the power before installation.
Remove the old ballast, capacitor and ignitor (if existing)



Step 2.

Connect the wire from the supply to the fixture and make sure the ground from the supply is connected to the ground from the fixture.

PACKING

Dimension
(Unit : mm)
· Size : $\phi 388 \times 248$ mm
· Weight : 8.6 kg (SMPS incl.) *SMPS : 1.2 kg

① Single Unit Box
(Unit : mm)

② Pallet
(Unit : mm)

Type	① Single Unit Box	② Pallet	20ft Container-Palletized	Remarks
Quantity	1	20	200 (10 Pallets)	[1Pallets] 2R x 2R X 5L = 20pcs
Dimension(mm)	440 x 440 x 210	1,100 x 1,100 x 1,200	5,500 x 2,200 x 1,200	
GWT(kg)	9.3	201.5	2,015	
CBM	0.04	1.452	14.52	

⚠ WARNINGS

- Do not use with direct current and ballast.
- This lamp is non-dimmable, do not connect with dimmer.
- Do not install the lamp in an enclosed place.
- Do not install on any other shade that is not provided by ICEPIPE.
- Please follow the recommended daily operating hours.
- Please read the instruction manual carefully before installation.



* Please refer to our full warranty terms and contact your sales representative for details.

